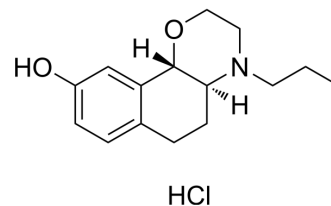


ent-Naxagolide hydrochloride

Cat. No.:	HY-115192
CAS No.:	100935-99-7
Molecular Formula:	C ₁₅ H ₂₂ ClNO ₂
Molecular Weight:	283.79
Target:	Dopamine Receptor
Pathway:	GPCR/G Protein; Neuronal Signaling
Storage:	Please store the product under the recommended conditions in the Certificate of Analysis.



BIOLOGICAL ACTIVITY

Description	ent-Naxagolide (ent-MK-458) hydrochloride is a dopamine D2-receptor agonist. ent-Naxagolide hydrochloride can be used in the study of extrapyramidal diseases and Parkinson's syndrome.
IC₅₀ & Target	Dopamine D2-Receptor.

Caution: Product has not been fully validated for medical applications. For research use only.

Tel: 609-228-6898

Fax: 609-228-5909

E-mail: tech@MedChemExpress.com

Address: 1 Deer Park Dr, Suite Q, Monmouth Junction, NJ 08852, USA