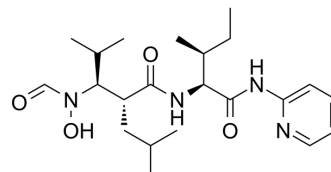


## GW-3333

Cat. No.:	HY-115351
CAS No.:	212609-68-2
Molecular Formula:	C <sub>22</sub> H <sub>36</sub> N <sub>4</sub> O <sub>4</sub>
Molecular Weight:	420.55
Target:	TNF Receptor; MMP
Pathway:	Apoptosis; Metabolic Enzyme/Protease
Storage:	Please store the product under the recommended conditions in the Certificate of Analysis.



### BIOLOGICAL ACTIVITY

Description	GW-3333 is a potent and orally active TNF-alpha-converting enzyme (TACE) and matrix metalloproteinases (MMP) inhibitor. GW-3333 inhibits tumor necrosis factor-alpha (TNF-alpha) production. GW-3333 can be used in research of arthritis <sup>[1][2]</sup> .
In Vivo	GW-3333 inhibits both ankle swelling and joint destruction in rat models of arthritis <sup>[1]</sup> . GW-3333 (p.o.) blocks the increase in plasma TNF after LPS for up to 12 h in rat models of arthritis <sup>[1]</sup> . MCE has not independently confirmed the accuracy of these methods. They are for reference only.

### REFERENCES

[1]. Conway JG, et, al. Inhibition of tumor necrosis factor-alpha (TNF-alpha) production and arthritis in the rat by GW3333, a dual inhibitor of TNF-alpha-converting enzyme and matrix metalloproteinases. J Pharmacol Exp Ther. 2001 Sep;298(3):900-8.

[2]. Doggrell SA. TACE inhibition: a new approach to treating inflammation. Expert Opin Investig Drugs. 2002 Jul;11(7):1003-6.

**Caution: Product has not been fully validated for medical applications. For research use only.**

Tel: 609-228-6898

Fax: 609-228-5909

E-mail: tech@MedChemExpress.com

Address: 1 Deer Park Dr, Suite Q, Monmouth Junction, NJ 08852, USA