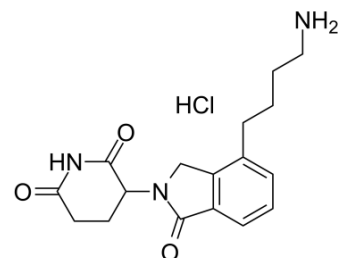


## Lenalidomide-C4-NH<sub>2</sub> hydrochloride

<b>Cat. No.:</b>	HY-115446A		
<b>Molecular Formula:</b>	C <sub>17</sub> H <sub>22</sub> ClN <sub>3</sub> O <sub>3</sub>		
<b>Molecular Weight:</b>	351.83		
<b>Target:</b>	E3 Ligase Ligand-Linker Conjugate		
<b>Pathway:</b>	PROTAC		
<b>Storage:</b>	Powder	-20°C	3 years
		4°C	2 years
	In solvent	-80°C	6 months
		-20°C	1 month



### SOLVENT & SOLUBILITY

#### In Vitro

DMSO : 130 mg/mL (369.50 mM; Need ultrasonic)  
 H<sub>2</sub>O : 100 mg/mL (284.23 mM; Need ultrasonic)

Preparing Stock Solutions	Concentration	Mass		
		1 mg	5 mg	10 mg
	1 mM	2.8423 mL	14.2114 mL	28.4228 mL
	5 mM	0.5685 mL	2.8423 mL	5.6846 mL
	10 mM	0.2842 mL	1.4211 mL	2.8423 mL

Please refer to the solubility information to select the appropriate solvent.

#### In Vivo

- Add each solvent one by one: 10% DMSO >> 40% PEG300 >> 5% Tween-80 >> 45% saline  
 Solubility: ≥ 2.17 mg/mL (6.17 mM); Clear solution
- Add each solvent one by one: 10% DMSO >> 90% (20% SBE-β-CD in saline)  
 Solubility: ≥ 2.17 mg/mL (6.17 mM); Clear solution

### BIOLOGICAL ACTIVITY

#### Description

Lenalidomide-C4-NH<sub>2</sub> hydrochloride is the Lenalidomide-based Cereblon ligand used in the recruitment of CRBN protein. Lenalidomide-C4-NH<sub>2</sub> hydrochloride can be connected to the ligand for protein by a linker to form PROTAC (Compound 24), which has IC<sub>50</sub>s of 0.98 nM and 13.7 nM in inhibition of RS4;11 and MOLM-13 acute leukemia cell lines growth, respectively<sup>[1]</sup>.

#### IC<sub>50</sub> & Target

Cereblon

### REFERENCES

---

[1]. Zhou B, et al. Discovery of a Small-Molecule Degradator of Bromodomain and Extra-Terminal (BET) Proteins with Picomolar Cellular Potencies and Capable of Achieving Tumor Regression. J Med Chem. 2018 Jan 25;61(2):462-481.

---

**Caution: Product has not been fully validated for medical applications. For research use only.**

Tel: 609-228-6898

Fax: 609-228-5909

E-mail: [tech@MedChemExpress.com](mailto:tech@MedChemExpress.com)

Address: 1 Deer Park Dr, Suite Q, Monmouth Junction, NJ 08852, USA