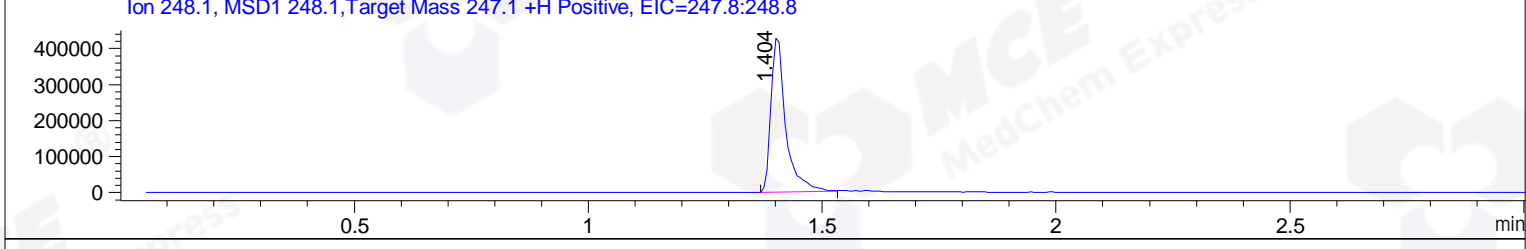
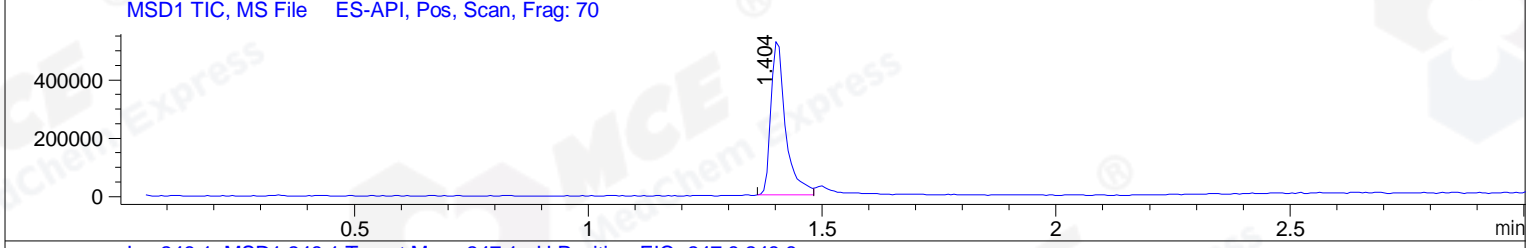
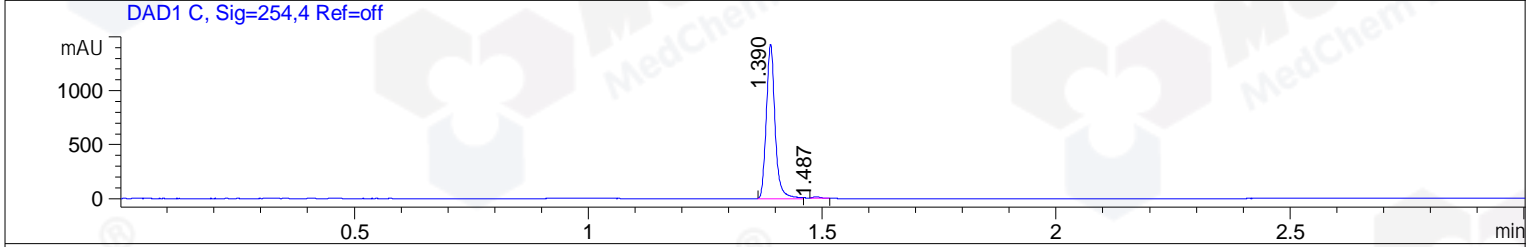
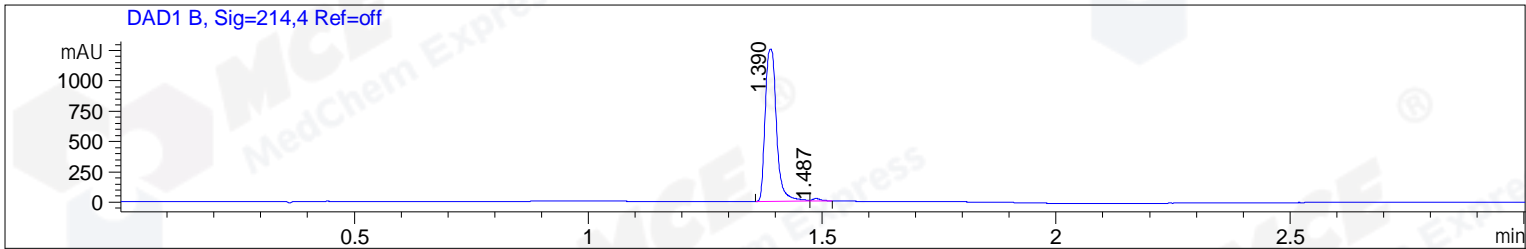


File ..1\DATA\2019\20190515\581\BIZ2019-515-CXL2.D Tgt Mass (CHM):
 Injection Date : 15 May 19 4:12 pm +0800 Seq. Line : 6
 Sample Name : BIZ2019-515-CXL2 Location : P2-D-07
 Acq. Operator : LQ_1052 Inj : 1
 Spec. Reported : MS Integration Inj Volume : 1 ul
 Acq. Method : D:\Chem32\1\data\2019\20190515\581\1-POS-3MIN.M
 Analysis Method : D:\CHEM32\1\DATA\2019\20190515\581\1-POS-3MIN.M
 Catalog No : HY-115453 Batch#41078
 Method Info : Mobile Phase: A: water(0.01%TFA) B:ACN(0.01%TFA)
 Gradient: 5% to 95%B within 1.3 min
 Flow Rate :1.8ml/min
 Column :SunFire C18, 4.6*50mm,3.5um A-RP-322
 Oven Temperature : 45



Integration Results for DAD1 B, Sig=214,4 Ref=off

RetTim	Width	Area	Height	Area%	MS (+)
1.39	0.03	2101.75	1255.74	98.55	248
1.49	0.02	30.89	22.93	1.45	248

Integration Results for DAD1 C, Sig=254,4 Ref=off

RetTim	Width	Area	Height	Area%	MS (+)
1.39	0.02	1853.93	1430.02	99.23	248
1.49	0.02	14.39	14.23	0.77	248

Integration Results for MSD1 TIC, MS File

RetTim	Width	Area	Height	Area%	MS (+)
1.40	0.03	1158553.38	534614.63	100.00	248

Ret. Time: 1.40

<<<< POSITIVE SPECTRA >>>>

ES-API Positive

