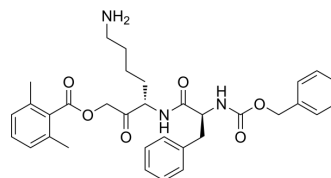


GB111-NH2

Cat. No.:	HY-115454
CAS No.:	956479-18-8
Molecular Formula:	C ₃₃ H ₃₉ N ₃ O ₆
Molecular Weight:	573.68
Target:	Cathepsin
Pathway:	Metabolic Enzyme/Protease
Storage:	Please store the product under the recommended conditions in the Certificate of Analysis.



BIOLOGICAL ACTIVITY

Description	GB111-NH2 is a cysteine cathepsin inhibitor and can be used in cancer research ^[1] .
-------------	---

REFERENCES

[1]. Salpeter SJ, et al. A novel cysteine cathepsin inhibitor yields macrophage cell death and mammary tumor regression. *Oncogene*. 2015 Dec 10;34(50):6066-78.

Caution: Product has not been fully validated for medical applications. For research use only.

Tel: 609-228-6898

Fax: 609-228-5909

E-mail: tech@MedChemExpress.com

Address: 1 Deer Park Dr, Suite Q, Monmouth Junction, NJ 08852, USA