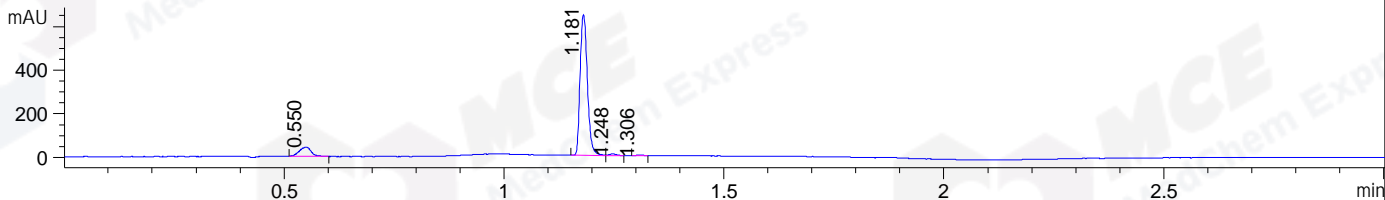
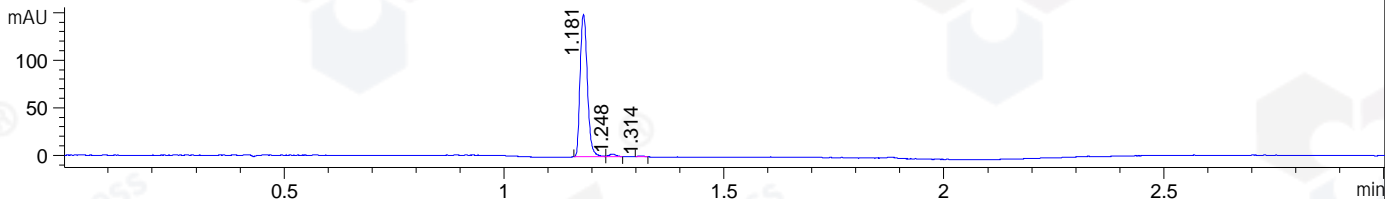


File ..\DATA\2020\20200327\897\BIZ2020-326-CXL7.D Tgt Mass (CHM):
 Injection Date : 27 Mar 20 2:59 pm +0800 Seq. Line : 76
 Sample Name : BIZ2020-326-CXL7 Location : P1-E-04
 Acq. Operator : ZJ_1432 Inj : 1
 Spec. Reported : MS Integration Inj Volume : 1.5 ul
 Acq. Method : D:\Chem32\1\data\2020\20200327\897\1-POS-3MIN.M
 Analysis Method : D:\CHEM32\1\DATA\2020\20200327\897\1-POS-3MIN.M
 Catalog No : HY-115463
 Method Info : Mobile Phase: A: water(0.01%TFA) B:ACN(0.01%TFA)
 Gradient: 5% to 95%B within 1.3 min
 Flow Rate :1.8ml/min
 Column :SunFire C18, 4.6*50mm,3.5um A-RP-433
 Oven Temperature : 45□

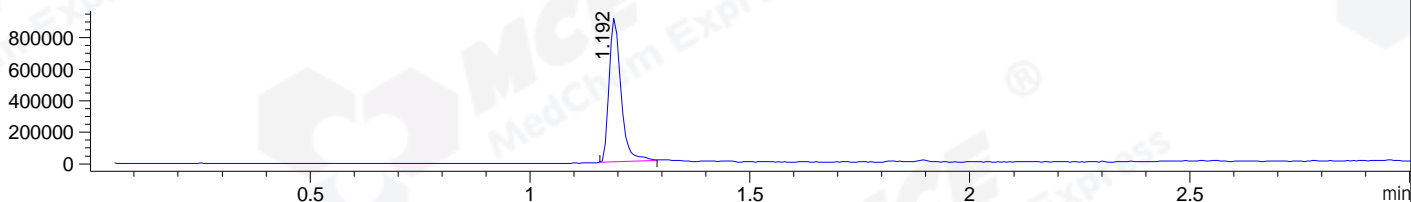
DAD1 B, Sig=214,4 Ref=off



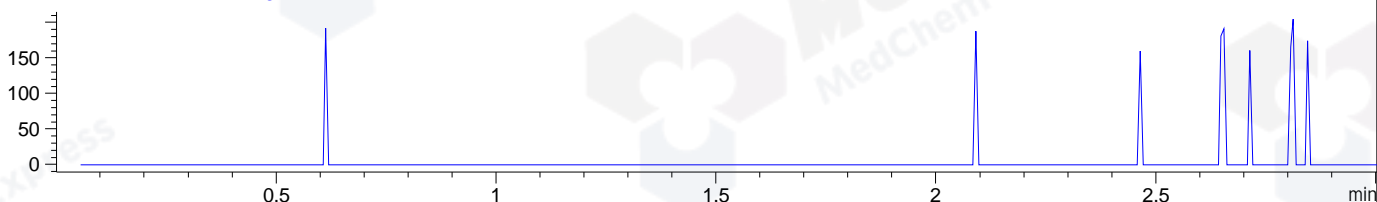
DAD1 C, Sig=254,4 Ref=off



MSD1 TIC, MS File ES-API, Pos, Scan, Frag: 70



Ion 643, MSD1 643, Target Mass 642 +H Positive, EIC=642.7:643.7



Integration Results for DAD1 B, Sig=214,4 Ref=off

RetTim	Width	Area	Height	Area%	MS (+)
0.55	0.03	78.32	41.68	9.42	ND
1.18	0.02	743.06	646.40	89.36	242
1.25	0.02	8.04	7.22	0.97	242
1.31	0.02	2.14	2.12	0.26	242

Integration Results for DAD1 C, Sig=254,4 Ref=off

RetTim	Width	Area	Height	Area%	MS (+)
1.18	0.02	171.01	149.81	98.06	242
1.25	0.02	2.72	2.47	1.56	242
1.31	0.02	0.67	0.73	0.38	242

Integration Results for MSD1 TIC, MS File

RetTim	Width	Area	Height	Area%	MS (+)
1.19	0.03	1722883.38	913965.13	100.00	242

Ret. Time: 1.19

<<<< POSITIVE SPECTRA >>>>

ES-API Positive

242.3

