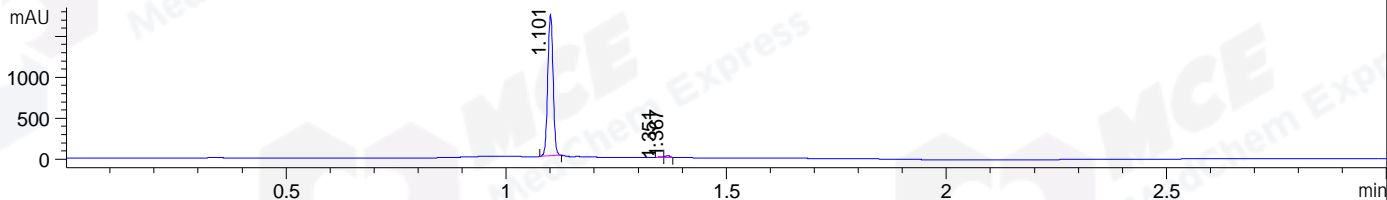
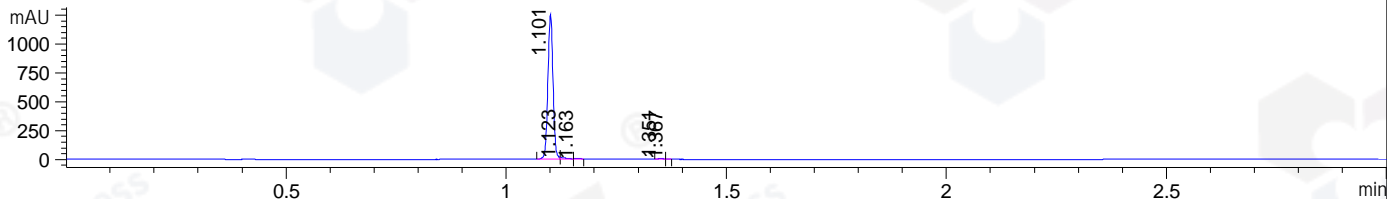


File ..\DATA\2020\20200902\1095\BIZ2020-901-WLQ5.D Tgt Mass (CHM):
 Injection Date : 2 Sep 20 12:52 pm +0800 Seq. Line : 5
 Sample Name : BIZ2020-901-WLQ5 Location : P1-A-08
 Acq. Operator : zyj_1547 Inj : 1
 Spec. Reported : MS Integration Inj Volume : 1 ul
 Acq. Method : D:\Chem32\1\data\2020\20200902\1095\1-POS-3MIN.M
 Analysis Method : D:\CHEM32\1\DATA\2020\20200902\1095\1-POS-3MIN.M
 Catalog No : HY-115470
 Method Info : Mobile Phase: A: water(0.01%TFA) B:ACN(0.01%TFA)
 Gradient: 5% to 95%B within 1.3 min
 Flow Rate :1.8ml/min
 Column :SunFire C18, 4.6*50mm,3.5um A-RP-607
 Oven Temperature : 45C

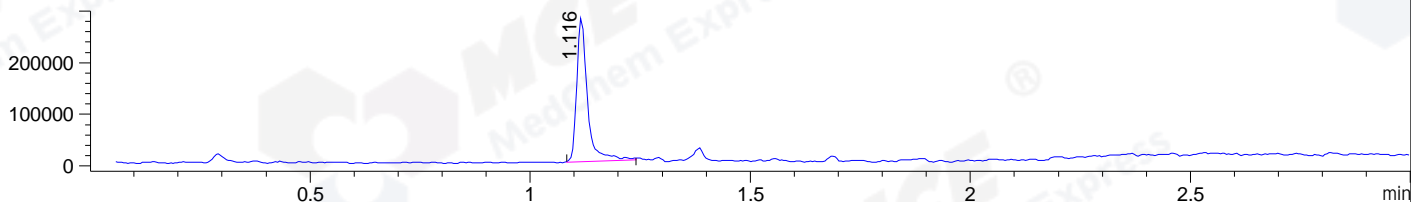
DAD1 B, Sig=214,4 Ref=off



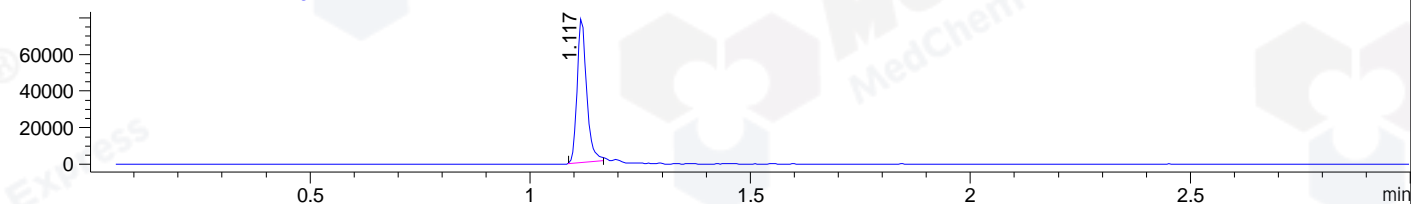
DAD1 C, Sig=254,4 Ref=off



MSD1 TIC, MS File ES-API, Pos, Scan, Frag: 70



Ion 483, MSD1 483, Target Mass 482 +H Positive, EIC=482.7:483.7



Integration Results for DAD1 B, Sig=214,4 Ref=off

RetTim	Width	Area	Height	Area%	MS (+)
1.10	0.01	1446.62	1726.68	98.40	242
1.35	0.01	6.75	9.25	0.46	ND
1.37	0.01	16.76	22.46	1.14	585

Integration Results for DAD1 C, Sig=254,4 Ref=off

RetTim	Width	Area	Height	Area%	MS (+)
1.10	0.01	1011.46	1255.19	98.06	242
1.12	0.01	9.09	12.97	0.88	242
1.16	0.01	2.70	3.68	0.26	242
1.35	0.01	5.68	6.90	0.55	ND
1.37	0.01	2.57	4.04	0.25	585

Integration Results for MSD1 TIC, MS File

RetTim	Width	Area	Height	Area%	MS (+)
1.12	0.03	475866.97	278286.59	100.00	242

Ret. Time: 1.12

<<<< POSITIVE SPECTRA >>>>

ES-API Positive

