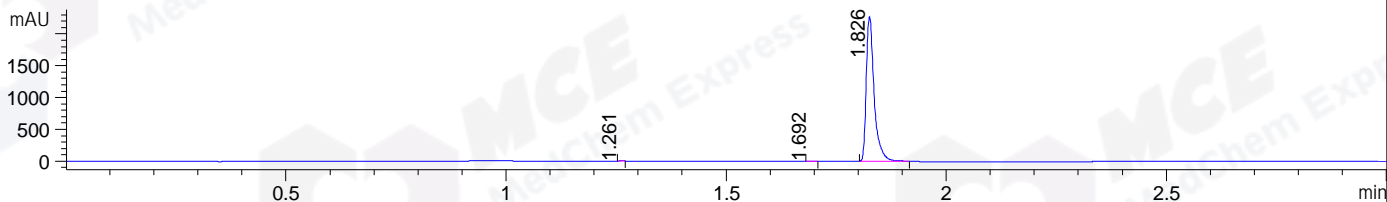
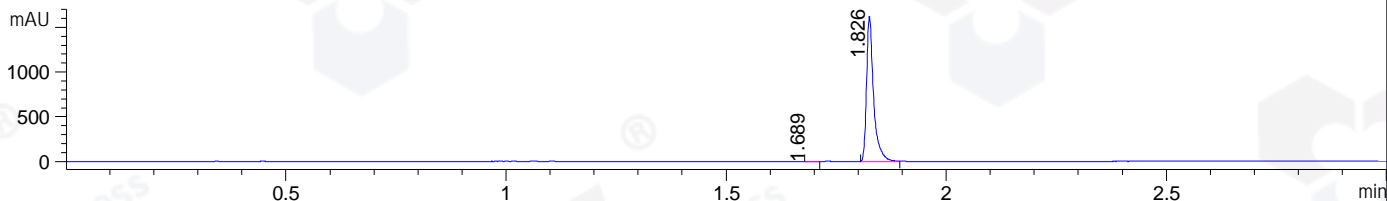


File ..DATA\2019\20190606\579 1\BIZ2019-605-CXL5.D Tgt Mass (CHM):  
 Injection Date : 6 Jun 19 11:56 am +0800 Seq. Line : 37  
 Sample Name : BIZ2019-605-CXL5 Location : P2-B-05  
 Acq. Operator : ZJ\_1432 Inj : 1  
 Spec. Reported : MS Integration Inj Volume : 1 ul  
 Acq. Method : D:\Chem32\1\data\2019\20190604\579 1\1-POS-3MIN.M  
 Analysis Method : D:\CHEM32\1\DATA\2019\20190606\579 1\1-POS-3MIN.M  
 Catalog No : HY-115475 Batch#41831  
 Method Info : Mobile Phase: A: water(0.01%TFA) B:ACN(0.01%TFA)  
 Gradient: 5% to 95%B within 1.3 min  
 Flow Rate :1.8ml/min  
 Column :SunFire C18, 4.6\*50mm,3.5um A-RP-433  
 Oven Temperature : 45

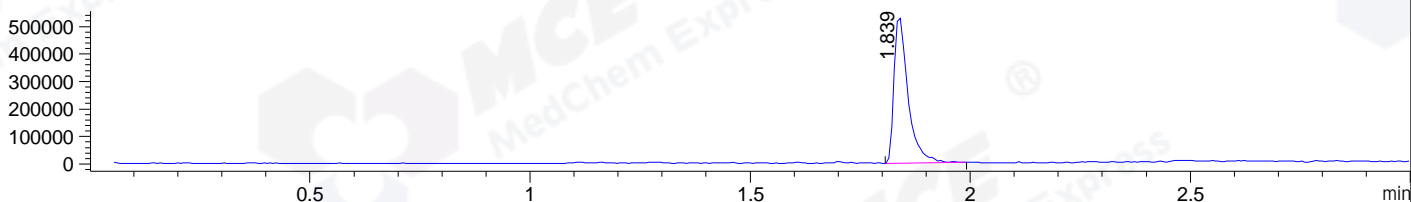
DAD1 B, Sig=214,4 Ref=off



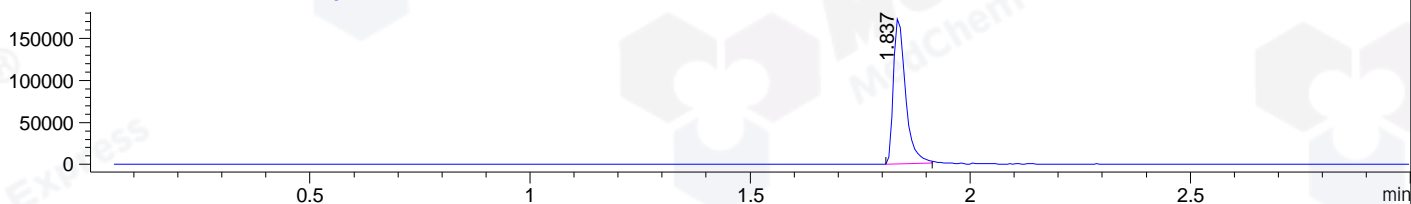
DAD1 C, Sig=254,4 Ref=off



MSD1 TIC, MS File ES-API, Pos, Scan, Frag: 70



Ion 317.1, MSD1 317.1, Target Mass 316.1 +H Positive, EIC=316.8:317.8



## Integration Results for DAD1 B, Sig=214,4 Ref=off

RetTim	Width	Area	Height	Area%	MS (+)
1.26	0.01	1.67	3.09	0.06	ND
1.69	0.01	0.71	0.93	0.02	168
1.83	0.02	2859.45	2275.46	99.92	317

## Integration Results for DAD1 C, Sig=254,4 Ref=off

RetTim	Width	Area	Height	Area%	MS (+)
1.69	0.01	0.38	0.43	0.02	168
1.83	0.02	1814.80	1624.69	99.98	317

## Integration Results for MSD1 TIC, MS File

RetTim	Width	Area	Height	Area%	MS (+)
1.84	0.03	1179602.88	535609.94	100.00	317

Ret. Time: 1.84

<<<< POSITIVE SPECTRA >>>>

ES-API Positive

