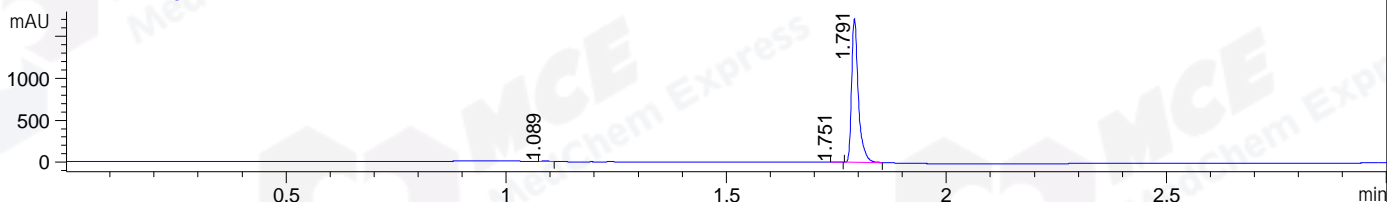
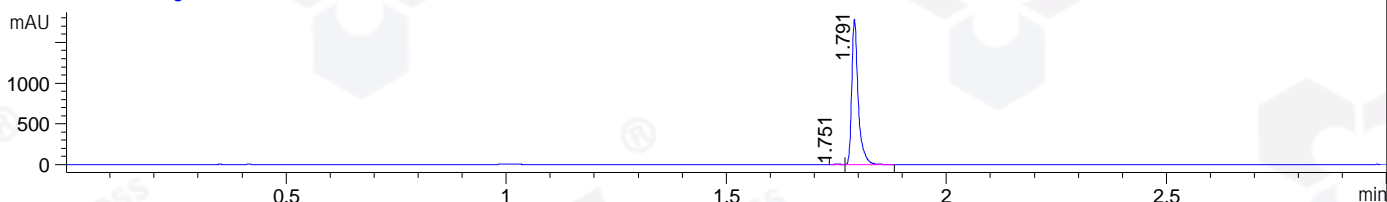


File ..\DATA\2020\20200909\1102\BIZ2020-908-WLQ3.D Tgt Mass (CHM):
Injection Date : 9 Sep 20 8:23 pm +0800 Seq. Line : 140
Sample Name : BIZ2020-908-WLQ3 Location : P1-E-02
Acq. Operator : zyj_1547 Inj : 1
Spec. Reported : MS Integration Inj Volume : 1 ul
Acq. Method : D:\Chem32\1\data\2020\20200909\1102\1-POS-3MIN.M
Analysis Method : D:\CHEM32\1\DATA\2020\20200909\1102\1-POS-3MIN.M
Catalog No : HY-115555
Method Info : Mobile Phase: A: water(0.01%TFA) B:ACN(0.01%TFA)
Gradient: 5% to 95%B within 1.3 min
Flow Rate :1.8ml/min
Column :SunFire C18, 4.6*50mm,3.5um A-RP-624

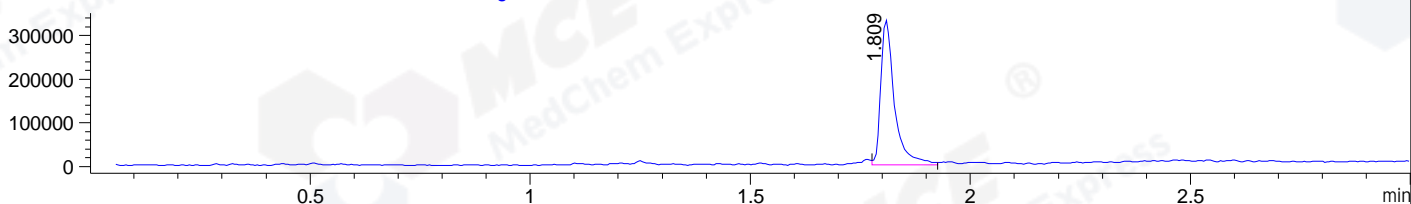
DAD1 B, Sig=214,4 Ref=off



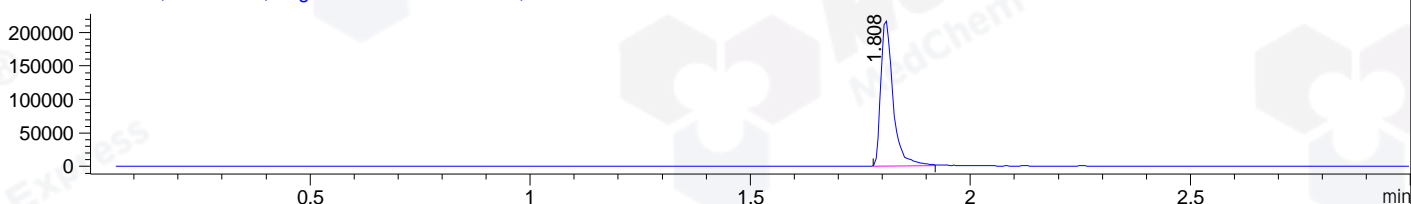
DAD1 C, Sig=254,4 Ref=off



MSD1 TIC, MS File ES-API, Pos, Scan, Frag: 70



Ion 448, MSD1 448, Target Mass 447 +H Positive, EIC=447.7:448.7



Integration Results for DAD1 B, Sig=214,4 Ref=off

| RetTim | Width | Area | Height | Area% | MS (+) |
|--------|-------|---------|---------|-------|--------|
| 1.09 | 0.01 | 8.54 | 9.60 | 0.47 | ND |
| 1.75 | 0.02 | 3.70 | 3.95 | 0.20 | 341 |
| 1.79 | 0.02 | 1824.19 | 1712.13 | 99.33 | 448 |

Integration Results for DAD1 C, Sig=254,4 Ref=off

| RetTim | Width | Area | Height | Area% | MS (+) |
|--------|-------|---------|---------|-------|--------|
| 1.75 | 0.02 | 6.41 | 5.56 | 0.35 | 341 |
| 1.79 | 0.02 | 1824.00 | 1785.65 | 99.65 | 448 |

Integration Results for MSD1 TIC, MS File

| RetTim | Width | Area | Height | Area% | MS (+) |
|--------|-------|-----------|-----------|--------|--------|
| 1.81 | 0.03 | 713140.31 | 331977.09 | 100.00 | 448 |

Ret. Time: 1.81

<<<< POSITIVE SPECTRA >>>>

ES-API Positive

