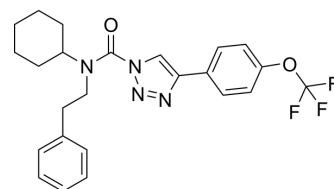


KLH45b

Cat. No.:	HY-115671
Molecular Formula:	C ₂₄ H ₂₅ F ₃ N ₄ O ₂
Molecular Weight:	458.48
Target:	Phosphatase
Pathway:	Metabolic Enzyme/Protease
Storage:	4°C, protect from light, stored under nitrogen * In solvent : -80°C, 6 months; -20°C, 1 month (protect from light, stored under nitrogen)



SOLVENT & SOLUBILITY

In Vitro	DMSO : 100 mg/mL (218.11 mM; Need ultrasonic)					
	Preparing Stock Solutions	Solvent Concentration	Mass	1 mg	5 mg	10 mg
			1 mM	2.1811 mL	10.9056 mL	21.8112 mL
			5 mM	0.4362 mL	2.1811 mL	4.3622 mL
			10 mM	0.2181 mL	1.0906 mL	2.1811 mL
Please refer to the solubility information to select the appropriate solvent.						
In Vivo	1. Add each solvent one by one: 10% DMSO >> 90% corn oil Solubility: ≥ 2.5 mg/mL (5.45 mM); Clear solution					

BIOLOGICAL ACTIVITY

Description	KLH45b is an inhibitor of DDHD2 (DDHD domain containing 2) ^[1] .
-------------	---

REFERENCES

[1]. Inloes JM, et al. The hereditary spastic paraplegia-related enzyme DDHD2 is a principal brain triglyceride lipase. Proc Natl Acad Sci U S A. 2014 Oct 14;111(41):14924-9.

Caution: Product has not been fully validated for medical applications. For research use only.

Tel: 609-228-6898

Fax: 609-228-5909

E-mail: tech@MedChemExpress.com

Address: 1 Deer Park Dr, Suite Q, Monmouth Junction, NJ 08852, USA