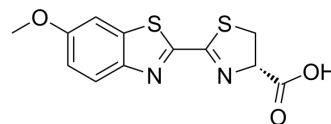


D-Luciferin 6'-methyl ether

Cat. No.:	HY-115749
CAS No.:	24404-90-8
Molecular Formula:	C ₁₂ H ₁₀ N ₂ O ₃ S ₂
Molecular Weight:	294.35
Target:	Others
Pathway:	Others
Storage:	4°C, protect from light * In solvent : -80°C, 6 months; -20°C, 1 month (protect from light)



SOLVENT & SOLUBILITY

In Vitro

DMSO : 11.11 mg/mL (37.74 mM; ultrasonic and warming and heat to 60°C)

Preparing Stock Solutions	Solvent		1 mg	5 mg	10 mg
	Concentration	Mass			
	1 mM		3.3973 mL	16.9866 mL	33.9732 mL
	5 mM		0.6795 mL	3.3973 mL	6.7946 mL
	10 mM		0.3397 mL	1.6987 mL	3.3973 mL

Please refer to the solubility information to select the appropriate solvent.

BIOLOGICAL ACTIVITY

Description

D-Luciferin 6'-methyl ether (6'-Methoxyluciferin; compound 19a) is a potent luciferase from the North American firefly *Photinus pyralis* (PpyLuc) inhibitor with an IC₅₀ of 0.1 μM. D-Luciferin 6'-methyl ether, a D-luciferin analog, shows non-specific interactions at ATP- and luciferin-binding sites of the PpyLuc active site^[1].

REFERENCES

[1]. Giuseppe Meroni, et al. D-Luciferin, derivatives and analogues: synthesis and in vitro/in vivo luciferase-catalyzed bioluminescent activity. Volume 2009, Issue 1, Reviews and Accounts, pp. 265-288

Caution: Product has not been fully validated for medical applications. For research use only.

Tel: 609-228-6898

Fax: 609-228-5909

E-mail: tech@MedChemExpress.com

Address: 1 Deer Park Dr, Suite Q, Monmouth Junction, NJ 08852, USA