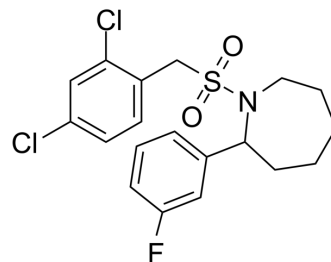


Bim-IN-1

Cat. No.:	HY-115930		
CAS No.:	2909483-36-7		
Molecular Formula:	C ₁₉ H ₂₀ Cl ₂ FNO ₂ S		
Molecular Weight:	416.34		
Target:	Bcl-2 Family		
Pathway:	Apoptosis		
Storage:	Powder	-20°C	3 years
		4°C	2 years
	In solvent	-80°C	6 months
		-20°C	1 month



SOLVENT & SOLUBILITY

In Vitro

DMSO : 200 mg/mL (480.38 mM; Need ultrasonic)

Concentration	Mass		
	1 mg	5 mg	10 mg
1 mM	2.4019 mL	12.0094 mL	24.0188 mL
5 mM	0.4804 mL	2.4019 mL	4.8038 mL
10 mM	0.2402 mL	1.2009 mL	2.4019 mL

Please refer to the solubility information to select the appropriate solvent.

BIOLOGICAL ACTIVITY

Description

Bim-IN-1 is a potent Bim expression inhibitor. Bim-IN-1 reduces Bim expression levels and has little inhibitory effect upon protein kinase A activity and minimal toxicity^[1].

IC₅₀ & Target

Bim

In Vitro

Bim-IN-1 (compound 63, mouse embryonic fibroblasts; 0, 25, 50 μM; 72 hours) demonstrates strong reduction of Bim expression levels at a low micromolar level with low toxicity^[1].

MCE has not independently confirmed the accuracy of these methods. They are for reference only.

REFERENCES

[1]. Richards BJ, et al. Discovery, synthesis and exploration of N-benzylsulfonyl-2-phenylazepanes as inhibitors of Bim expression in a mouse embryonic fibroblast model. Bioorg Chem. 2022; 120:105635.

Caution: Product has not been fully validated for medical applications. For research use only.

Tel: 609-228-6898

Fax: 609-228-5909

E-mail: tech@MedChemExpress.com

Address: 1 Deer Park Dr, Suite Q, Monmouth Junction, NJ 08852, USA