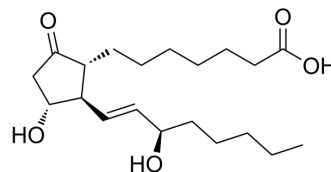


## 15-epi-PGE1

Cat. No.:	HY-116096
CAS No.:	20897-91-0
Molecular Formula:	C <sub>20</sub> H <sub>34</sub> O <sub>5</sub>
Molecular Weight:	354.48
Target:	15-PGDH
Pathway:	Metabolic Enzyme/Protease
Storage:	Please store the product under the recommended conditions in the Certificate of Analysis.



### BIOLOGICAL ACTIVITY

Description	15-epi-PGE1 (15R-Prostaglandin E1; 15-Epiprostaglandin E1) is a stereoisomer of PGE1 (HY-B0131) but with less biological activity <sup>[2]</sup> . 15-epi-PGE1 is a non-competitive inhibitor for human placental 15-Hydroxyprostaglandin dehydrogenase (15-PGDH) with an IC <sub>50</sub> of 170 μM <sup>[1]</sup> .
IC <sub>50</sub> & Target	170 μM (15-PGDH)

### REFERENCES

[1]. Jarabak J, et al., Kinetic studies on a 15-hydroxyprostaglandin dehydrogenase from human placenta. Arch Biochem Biophys. 1976 Nov;177(1):245-54.

[2]. MURAKAMI A, et al., Conformational analysis of prostaglandins. II. Most probable conformation of prostaglandin A, B, E, and F. Chemical and Pharmaceutical Bulletin. 1977 25(1):2870-2874

**Caution: Product has not been fully validated for medical applications. For research use only.**

Tel: 609-228-6898

Fax: 609-228-5909

E-mail: tech@MedChemExpress.com

Address: 1 Deer Park Dr, Suite Q, Monmouth Junction, NJ 08852, USA