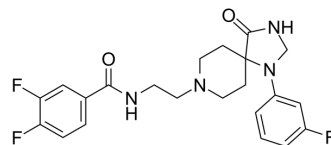


ML-298

Cat. No.:	HY-116165		
CAS No.:	1426916-02-0		
Molecular Formula:	C ₂₂ H ₂₃ F ₃ N ₄ O ₂		
Molecular Weight:	432.44		
Target:	Phospholipase		
Pathway:	Metabolic Enzyme/Protease		
Storage:	Powder	-20°C	3 years
		4°C	2 years
	In solvent	-80°C	6 months
		-20°C	1 month



SOLVENT & SOLUBILITY

In Vitro

DMSO : 125 mg/mL (289.06 mM; Need ultrasonic)

Concentration	Mass		
	1 mg	5 mg	10 mg
1 mM	2.3125 mL	11.5623 mL	23.1246 mL
5 mM	0.4625 mL	2.3125 mL	4.6249 mL
10 mM	0.2312 mL	1.1562 mL	2.3125 mL

Please refer to the solubility information to select the appropriate solvent.

BIOLOGICAL ACTIVITY

Description

ML298 is a potent and selective inhibitor of Phospholipase D2 (PLD2) with an IC₅₀ of 355 nM. ML298 decreases invasive migration in U87-MG glioblastoma cells^[1].

REFERENCES

[1]. O'Reilly MC, et al. Development of dual PLD1/2 and PLD2 selective inhibitors from a common 1,3,8-Triazaspiro[4.5]decane Core: discovery of ML298 and ML299 that decrease invasive migration in U87-MG glioblastoma cells. J Med Chem. 2013 Mar 28;56(6):2695-9.

Caution: Product has not been fully validated for medical applications. For research use only.

Tel: 609-228-6898

Fax: 609-228-5909

E-mail: tech@MedChemExpress.com

Address: 1 Deer Park Dr, Suite Q, Monmouth Junction, NJ 08852, USA