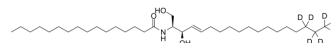


C16 Ceramide-d7

Cat. No.: HY-116258S
CAS No.: 1840942-13-3
Molecular Formula: C₃₄H₆₀D₇NO₃
Molecular Weight: 544.94
Storage: Please store the product under the recommended conditions in the Certificate of Analysis.



Caution: Product has not been fully validated for medical applications. For research use only.

Tel: 609-228-6898

Fax: 609-228-5909

E-mail: tech@MedChemExpress.com

Address: 1 Deer Park Dr, Suite Q, Monmouth Junction, NJ 08852, USA