

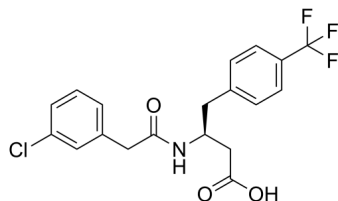
CATPB

Cat. No.: HY-116263
 Batch No.: 346324
 CAS No.: 1322598-09-3
 Molecular Formula: C₁₉H₁₇ClF₃NO₃

ANALYTICAL DATA

Theoretical: C(57.08%), H(4.29%), N(3.50%)
 Result: C(56.71%), H(4.26%), N(3.44%)

Chemical Structure:



Caution: Product has not been fully validated for medical applications. For research use only.

Tel: 609-228-6898

Fax: 609-228-5909

E-mail: tech@MedChemExpress.com

Address: 1 Deer Park Dr, Suite Q, Monmouth Junction, NJ 08852, USA