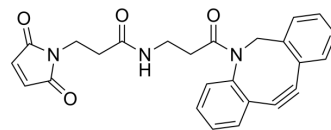


## DBCO-Maleimide

|                    |  |
|--------------------|--|
| Cat. No.:          | HY-116270  |
| CAS No.:           | 1395786-30-7   |
| Molecular Formula: | C <sub>25</sub> H <sub>21</sub> N <sub>3</sub> O <sub>4</sub>  |
| Molecular Weight:  | 427.45   |
| Target:            | ADC Linker   |
| Pathway:           | Antibody-drug Conjugate/ADC Related  |
| Storage:           | -20°C, sealed storage, away from moisture<br>* In solvent : -80°C, 6 months; -20°C, 1 month (sealed storage, away from moisture) |



### SOLVENT & SOLUBILITY

|   |   |                          |              |            |            |
|---|---|--------------------------|--------------|------------|------------|
| In Vitro  | DMSO : 125 mg/mL (292.43 mM; ultrasonic and warming and heat to 60°C)   |                          |              |            |            |
|   |   | Solvent<br>Concentration | Mass<br>1 mg | 5 mg       | 10 mg      |
|   | Preparing<br>Stock Solutions  | 1 mM                     | 2.3395 mL    | 11.6973 mL | 23.3945 mL |
|   |   | 5 mM                     | 0.4679 mL    | 2.3395 mL  | 4.6789 mL  |
|   |   | 10 mM                    | 0.2339 mL    | 1.1697 mL  | 2.3395 mL  |
| Please refer to the solubility information to select the appropriate solvent. |   |                          |              |            |            |
| In Vivo   | 1. Add each solvent one by one: 10% DMSO >> 40% PEG300 >> 5% Tween-80 >> 45% saline<br>Solubility: ≥ 2.08 mg/mL (4.87 mM); Clear solution |                          |              |            |            |
|   | 2. Add each solvent one by one: 10% DMSO >> 90% (20% SBE-β-CD in saline)<br>Solubility: ≥ 2.08 mg/mL (4.87 mM); Clear solution            |                          |              |            |            |
|   | 3. Add each solvent one by one: 10% DMSO >> 90% corn oil<br>Solubility: ≥ 2.08 mg/mL (4.87 mM); Clear solution                            |                          |              |            |            |

### BIOLOGICAL ACTIVITY

|                           |   |
|---------------------------|---|
| Description               | DBCO-Maleimide is a cleavable ADC linker used in the synthesis of antibody-drug conjugates (ADCs) <sup>[1]</sup> .  |
| IC <sub>50</sub> & Target | Cleavable   |
| In Vitro                  | ADCs are comprised of an antibody to which is attached an ADC cytotoxin through an ADC linker.<br>MCE has not independently confirmed the accuracy of these methods. They are for reference only. |

### REFERENCES

---

[1]. Modified antibody and radioactive metal-labelled antibody. WO2019203191A1.

---

**Caution: Product has not been fully validated for medical applications. For research use only.**

Tel: 609-228-6898

Fax: 609-228-5909

E-mail: [tech@MedChemExpress.com](mailto:tech@MedChemExpress.com)

Address: 1 Deer Park Dr, Suite Q, Monmouth Junction, NJ 08852, USA