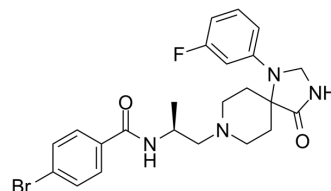


ML299

Cat. No.:	HY-116273
CAS No.:	1426916-00-8
Molecular Formula:	C ₂₃ H ₂₆ BrFN ₄ O ₂
Molecular Weight:	489.38
Target:	Phospholipase
Pathway:	Metabolic Enzyme/Protease
Storage:	Please store the product under the recommended conditions in the Certificate of Analysis.



BIOLOGICAL ACTIVITY

Description

ML299 is a selective allosteric modulator and a dual inhibitor of phospholipases D1 and D2 (IC₅₀ values are 6 and 12 nM, respectively). ML299 decreases invasive migration in U87-MG glioblastoma cells^[1].

REFERENCES

[1]. O'Reilly MC, et al. Development of dual PLD1/2 and PLD2 selective inhibitors from a common 1,3,8-Triazaspiro[4.5]decane Core: discovery of ML298 and ML299 that decrease invasive migration in U87-MG glioblastoma cells. *J Med Chem.* 2013 Mar 28;56(6):2695-9.

Caution: Product has not been fully validated for medical applications. For research use only.

Tel: 609-228-6898

Fax: 609-228-5909

E-mail: tech@MedChemExpress.com

Address: 1 Deer Park Dr, Suite Q, Monmouth Junction, NJ 08852, USA