

File ..1\DATA\2019\20190414\561\BIZ2019-412-WYQ1.D Tgt Mass (CHM):

Injection Date : 14 Apr 19 12:57 pm +0800 Seq. Line : 42

Sample Name : BIZ2019-412-WYQ1 Location : P1-C-02

Acq. Operator : LQ_1052 Inj : 1

Spec. Reported : MS Integration Inj Volume : 1 ul

Acq. Method : D:\Chem32\1\data\2019\20190414\561\1-POS-3MIN-1.M

Analysis Method : D:\CHEM32\1\DATA\2019\20190414\561\1-POS-3MIN-1.M

Catalog No : HY-116448 Batch#39947

Method Info : Mobile Phase: A: water(0.01%TFA) B:ACN(0.01%TFA)

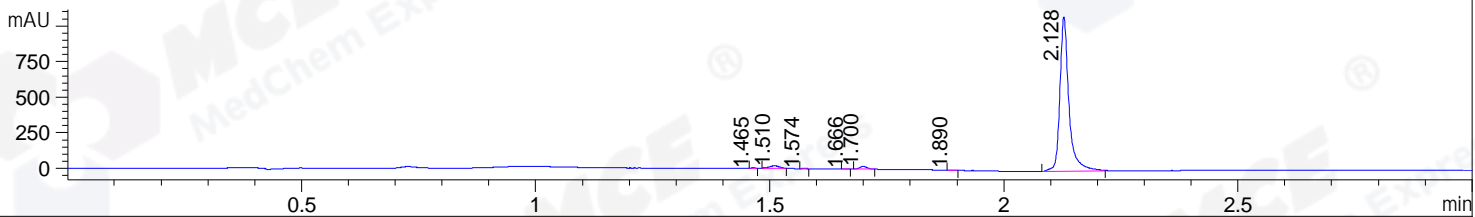
Gradient: 5% to 95%B within 1.3 min

Flow Rate :1.8ml/min

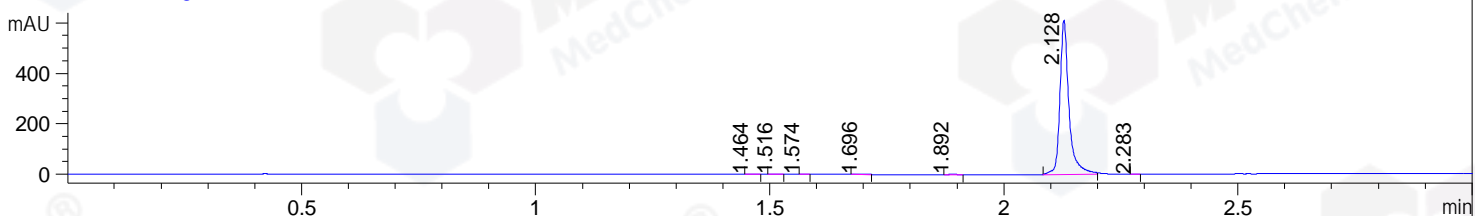
Column :SunFire C18, 4.6*50mm,3.5um A-RP-314

Oven Temperature : 45

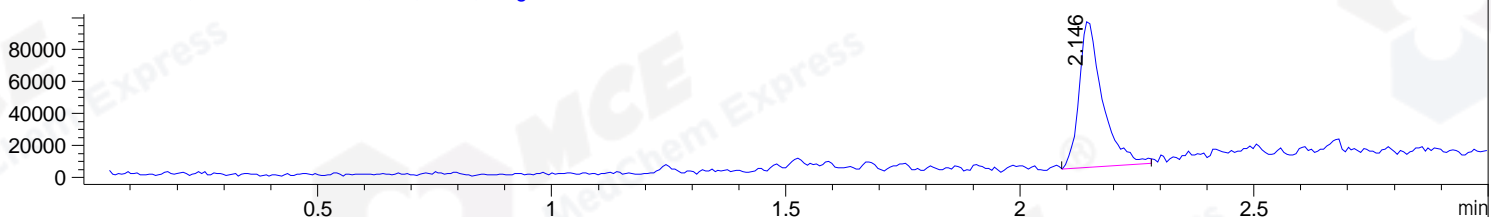
DAD1 B, Sig=214,4 Ref=off



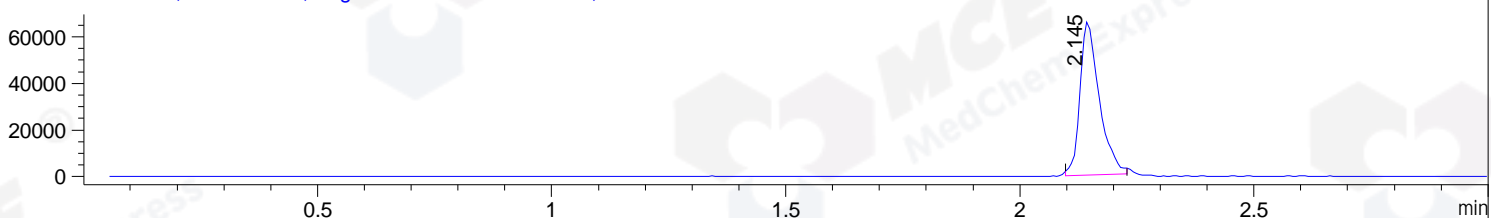
DAD1 C, Sig=254,4 Ref=off



MSD1 TIC, MS File ES-API, Pos, Scan, Frag: 70



Ion 507.1, MSD1 507.1, Target Mass 506.1 +H Positive, EIC=506.8:507.8



Integration Results for DAD1 B, Sig=214,4 Ref=off

RetTim	Width	Area	Height	Area%	MS (+)
1.47	0.01	0.68	1.11	0.05	236
1.51	0.02	23.71	16.60	1.57	ND
1.57	0.01	0.58	0.93	0.04	ND
1.67	0.01	0.59	0.89	0.04	218
1.70	0.02	20.77	19.49	1.38	218
1.89	0.01	0.98	1.25	0.07	ND
2.13	0.02	1460.91	1085.29	96.86	507

Integration Results for DAD1 C, Sig=254,4 Ref=off

RetTim	Width	Area	Height	Area%	MS (+)
1.46	0.02	1.63	1.62	0.20	236
1.52	0.02	1.01	0.89	0.12	ND
1.57	0.01	0.34	0.50	0.04	ND
1.70	0.02	2.30	1.73	0.28	218
1.89	0.02	1.94	1.75	0.23	ND
2.13	0.02	820.12	611.30	99.09	507
2.28	0.01	0.27	0.34	0.03	142

Integration Results for MSD1 TIC, MS File

RetTim	Width	Area	Height	Area%	MS(+)
2.15	0.05	320388.47	92073.28	100.00	507

Ret. Time: 2.15

<<<< POSITIVE SPECTRA >>>>

ES-API Positive

