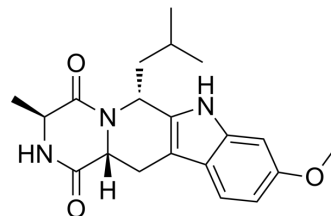


(6R)-ML753286

Cat. No.:	HY-116494A		
Molecular Formula:	C ₂₀ H ₂₅ N ₃ O ₃		
Molecular Weight:	355.43		
Target:	Others		
Pathway:	Others		
Storage:	Powder	-20°C	3 years
		4°C	2 years
	In solvent	-80°C	6 months
		-20°C	1 month



SOLVENT & SOLUBILITY

In Vitro

DMSO : 25 mg/mL (70.34 mM; Need ultrasonic)

Concentration	Solvent	Mass		
		1 mg	5 mg	10 mg
Preparing Stock Solutions	1 mM	2.8135 mL	14.0675 mL	28.1349 mL
	5 mM	0.5627 mL	2.8135 mL	5.6270 mL
	10 mM	0.2813 mL	1.4067 mL	2.8135 mL

Please refer to the solubility information to select the appropriate solvent.

BIOLOGICAL ACTIVITY

Description

(6R)-ML753286 is an isomer of ML753286 (HY-116494). ML753286 is an orally active and selective BCRP (Breast cancer resistance protein) inhibitor with an IC₅₀ of 0.6 μM. ML753286 has high permeability and low to medium clearance in rodent and human liver S9 fractions, and is stable in plasma cross species^[1].

In Vitro

ML753286 has IC₅₀ values of >30, 0.6, and 39.0 μM for the inhibition of P-gp-, BCRP-, and OATP mediated transport, respectively^[1].

MCE has not independently confirmed the accuracy of these methods. They are for reference only.

In Vivo

ML753286 (25- or 50-mg/kg (PO); 10 or 20 mg/kg (IV); 0.083-24 hours) appears to completely inhibit Bcrp functions in rats at 25 mg/kg PO or at 20 mg/kg IV. The t_{max} values in plasma were 1.4, 4.0, and 4.1 hours in Bcrp KO rats, WT rats pre-administered 25-mg/kg ML753286, and WT rats pre-administered 50-mg/kg ML753286, respectively^[1].

MCE has not independently confirmed the accuracy of these methods. They are for reference only.

REFERENCES

[1]. Liao M, et al. Preclinical absorption, distribution, metabolism, excretion and pharmacokinetics of a novel selective inhibitor of breast cancer resistance protein (BCRP). *Xenobiotica*. 2018 May;48(5):467-477.

Caution: Product has not been fully validated for medical applications. For research use only.

Tel: 609-228-6898

Fax: 609-228-5909

E-mail: tech@MedChemExpress.com

Address: 1 Deer Park Dr, Suite Q, Monmouth Junction, NJ 08852, USA