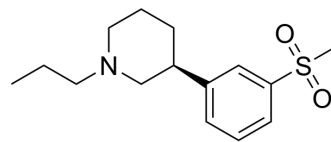


## (-)-OSU6162

Cat. No.:	HY-116495
CAS No.:	146798-66-5
Molecular Formula:	C <sub>15</sub> H <sub>23</sub> NO <sub>2</sub> S
Molecular Weight:	281.41
Target:	Dopamine Receptor
Pathway:	GPCR/G Protein; Neuronal Signaling
Storage:	Please store the product under the recommended conditions in the Certificate of Analysis.



### BIOLOGICAL ACTIVITY

Description	(-)-OSU6162 (PNU-96391) is a presynaptic dopamine receptor antagonist <sup>[1]</sup> .
-------------	--

### REFERENCES

[1]. Neu H, et al. Synthesis of [11C-methyl]-(-)-OSU6162, its regional brain distribution and some pharmacological effects of (-)-OSU6162 on the dopaminergic system studied in the rhesus monkey by positron emission tomography. Nucl Med Biol. 1997 Aug;24(6):507-11.

**Caution: Product has not been fully validated for medical applications. For research use only.**

Tel: 609-228-6898

Fax: 609-228-5909

E-mail: tech@MedChemExpress.com

Address: 1 Deer Park Dr, Suite Q, Monmouth Junction, NJ 08852, USA