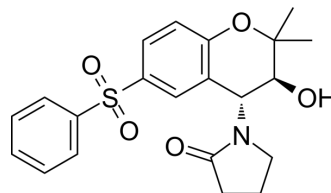


Rilmakalim

Cat. No.:	HY-116556
CAS No.:	132014-21-2
Molecular Formula:	C ₂₁ H ₂₃ NO ₅ S
Molecular Weight:	401.48
Target:	Others
Pathway:	Others
Storage:	Please store the product under the recommended conditions in the Certificate of Analysis.



BIOLOGICAL ACTIVITY

Description

Rilmakalim (HOE 234) is a potassium channel opener(PCO) that activates ATP-sensitive K⁺ channels in the heart or other tissues^[1].

REFERENCES

[1]. Kocic, Ivanet al. Hypotonic stress increases efficacy of rilmakalim, but not pinacidil, to activate ATP-sensitive K(+) current in guinea pig ventricular myocytes. Journal of pharmacological sciences vol. 95,2 (2004): 189-95.

Caution: Product has not been fully validated for medical applications. For research use only.

Tel: 609-228-6898

Fax: 609-228-5909

E-mail: tech@MedChemExpress.com

Address: 1 Deer Park Dr, Suite Q, Monmouth Junction, NJ 08852, USA