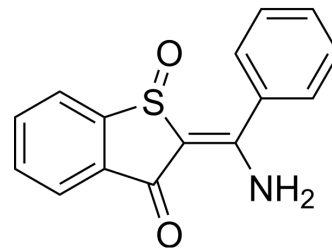


AF-CX 1325

| | |
|--------------------|---|
| Cat. No.: | HY-116685 |
| CAS No.: | 88708-96-7 |
| Molecular Formula: | C ₁₅ H ₁₁ NO ₂ S |
| Molecular Weight: | 269.32 |
| Target: | Others |
| Pathway: | Others |
| Storage: | Please store the product under the recommended conditions in the Certificate of Analysis. |



BIOLOGICAL ACTIVITY

| | |
|-------------|--|
| Description | AF-CX 1325 has strongest antiepileptic effect ^[1] . |
|-------------|--|

REFERENCES

[1]. Majkowski J, et al. Effects of carbamazepine, AF-CX 921, and AF-CX 1325 on epileptic discharges and seizures in hippocampally kindled rats. *Epilepsia*. 1986;27(4):391-398.

Caution: Product has not been fully validated for medical applications. For research use only.

Tel: 609-228-6898

Fax: 609-228-5909

E-mail: tech@MedChemExpress.com

Address: 1 Deer Park Dr, Suite Q, Monmouth Junction, NJ 08852, USA