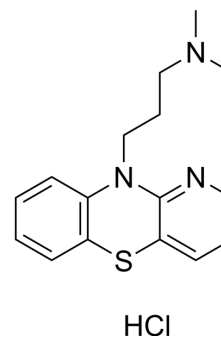


## Prothipendyl hydrochloride

Cat. No.:	HY-116780A
CAS No.:	1225-65-6
Molecular Formula:	C <sub>16</sub> H <sub>20</sub> ClN <sub>3</sub> S
Molecular Weight:	321.87
Target:	Others
Pathway:	Others
Storage:	Please store the product under the recommended conditions in the Certificate of Analysis.



### BIOLOGICAL ACTIVITY

#### Description

Prothipendyl hydrochloride is an orally active agent that can be used in the study of mental symptoms in the aged (e.g. anxiety)<sup>[1]</sup>.

### REFERENCES

[1]. J F FLEETWOOD, et al. The Treatment of Mental Symptoms in the Aged With Prothipendyl (Tolnate). J Coll Gen Pract. 1964 Sep;8(2):262-6.

**Caution: Product has not been fully validated for medical applications. For research use only.**

Tel: 609-228-6898

Fax: 609-228-5909

E-mail: tech@MedChemExpress.com

Address: 1 Deer Park Dr, Suite Q, Monmouth Junction, NJ 08852, USA