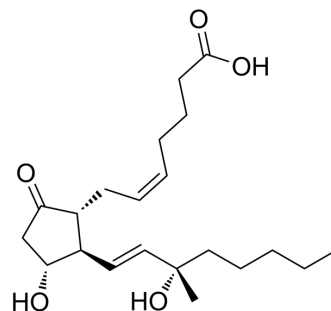


(15S)-15-Methylprostaglandin E2

Cat. No.:	HY-116843
CAS No.:	35700-27-7
Molecular Formula:	C ₂₁ H ₃₄ O ₅
Molecular Weight:	366.49
Target:	Prostaglandin Receptor
Pathway:	GPCR/G Protein
Storage:	Please store the product under the recommended conditions in the Certificate of Analysis.



BIOLOGICAL ACTIVITY

Description

(15S)-15-Methylprostaglandin E2 ((15R)-15-Methyl-PGE) is a prostaglandin E2 analog with the potential to prevent gastrointestinal bleeding and protect gastrointestinal cells^[1].

REFERENCES

[1]. Pullen RH, et al. Determination of (15R)- and (15S)-15-methylprostaglandin E2 in human plasma with picogram per milliliter sensitivity by column-switching high-performance liquid chromatography. J Chromatogr. 1985 Oct 11;343(2):271-83.

Caution: Product has not been fully validated for medical applications. For research use only.

Tel: 609-228-6898

Fax: 609-228-5909

E-mail: tech@MedChemExpress.com

Address: 1 Deer Park Dr, Suite Q, Monmouth Junction, NJ 08852, USA