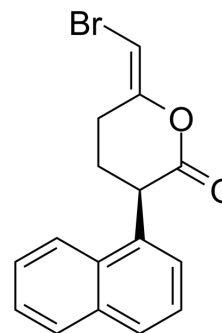


(R)-Bromo-enol lactone

Cat. No.:	HY-117068
CAS No.:	478288-90-3
Molecular Formula:	C ₁₆ H ₁₃ BrO ₂
Molecular Weight:	317.18
Target:	Phospholipase
Pathway:	Metabolic Enzyme/Protease
Storage:	Please store the product under the recommended conditions in the Certificate of Analysis.



BIOLOGICAL ACTIVITY

Description

(R)-Bromo-enol lactone ((R)-BEL) is an irreversible, chiral, mechanism-based inhibitor of calcium-independent phospholipase γ (iPLA2 γ). (R)-BEL inhibits human recombinant iPLA2 γ with an IC₅₀ of approximately 0.6 μ M^[1].

REFERENCES

[1]. Jenkins CM, et al. Identification of calcium-independent phospholipase A2 (iPLA2) beta, and not iPLA2gamma, as the mediator of arginine vasopressin-induced arachidonic acid release in A-10 smooth muscle cells. Enantioselective mechanism-based discrimination of mammalian iPLA2s. J Biol Chem. 2002 Sep 6;277(36):32807-14.

Caution: Product has not been fully validated for medical applications. For research use only.

Tel: 609-228-6898

Fax: 609-228-5909

E-mail: tech@MedChemExpress.com

Address: 1 Deer Park Dr, Suite Q, Monmouth Junction, NJ 08852, USA