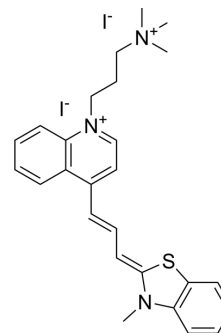


## TO-PRO-3 iodide

Cat. No.:	HY-117070
CAS No.:	157199-63-8
Molecular Formula:	C <sub>26</sub> H <sub>31</sub> I <sub>2</sub> N <sub>3</sub> S
Molecular Weight:	671
Target:	Fluorescent Dye
Pathway:	Others
Storage:	Solution, -20°C, protect from light, 2 years



### BIOLOGICAL ACTIVITY

#### Description

TO-PRO-3 iodide is a highly efficient blue fluorescent dye that can stain cytoplasm as a cell tracer.

**Caution: Product has not been fully validated for medical applications. For research use only.**

Tel: 609-228-6898

Fax: 609-228-5909

E-mail: [tech@MedChemExpress.com](mailto:tech@MedChemExpress.com)

Address: 1 Deer Park Dr, Suite Q, Monmouth Junction, NJ 08852, USA