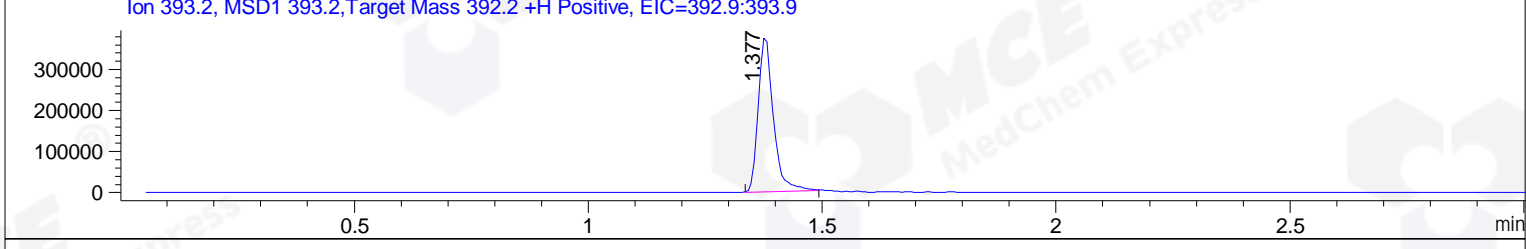
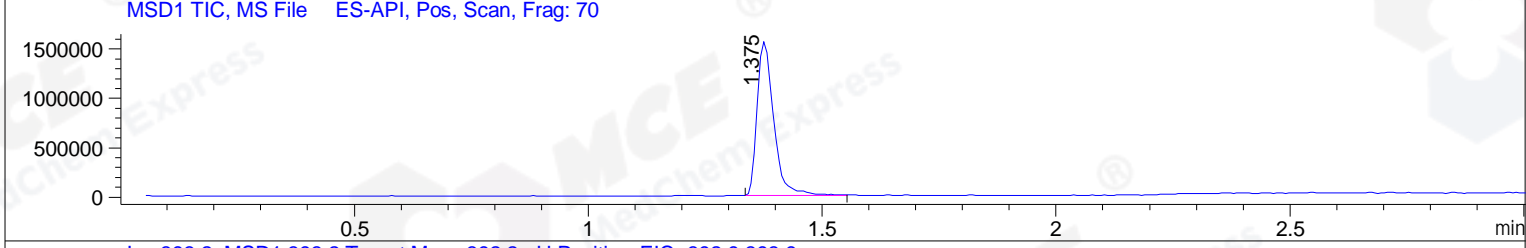
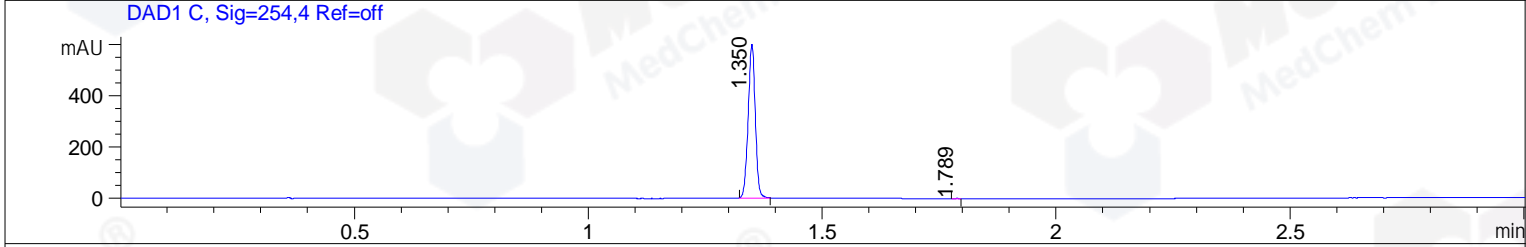
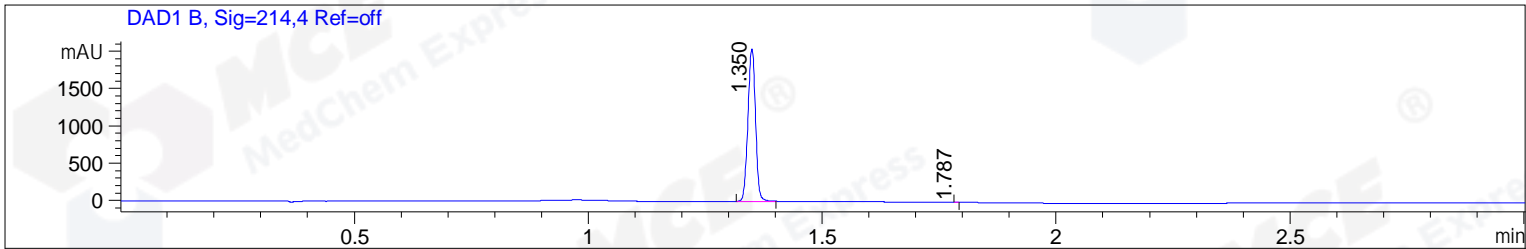


File ..1\DATA\2018\20181129\515\BIZ2018-N29-CXL1.D Tgt Mass (CHM):
 Injection Date : 29 Nov 18 2:13 pm +0800 Seq. Line : 7
 Sample Name : BIZ2018-N29-CXL1 Location : PL-E-06
 Acq. Operator : LQ_1052 Inj : 1
 Spec. Reported : MS Integration Inj Volume : 1 ul
 Acq. Method : D:\Chem32\1\data\2018\20181129\515\1-POS-3MIN-1.M
 Analysis Method : D:\CHEM32\1\DATA\2018\20181129\515\1-POS-3MIN-1.M
 Catalog No : HY-117154 Batch#34750,
 Method Info : Mobile Phase: A: water(0.01%TFA) B:ACN(0.01%TFA)
 Gradient: 5% to 95%B within 1.3 min
 Flow Rate :1.8ml/min
 Column :SunFire C18, 4.6*50mm,3.5um A-RP-314
 Oven Temperature : 45



Integration Results for DAD1 B, Sig=214,4 Ref=off

RetTim	Width	Area	Height	Area%	MS (+)
1.35	0.02	2325.23	2046.98	99.98	197
1.79	0.01	0.40	0.84	0.02	158

Integration Results for DAD1 C, Sig=254,4 Ref=off

RetTim	Width	Area	Height	Area%	MS (+)
1.35	0.02	639.37	601.85	99.95	197
1.79	0.01	0.30	0.39	0.05	158

Integration Results for MSD1 TIC, MS File

RetTim	Width	Area	Height	Area%	MS (+)
1.38	0.04	3872815.25	1561454.75	100.00	197

Ret. Time: 1.38

<<<< POSITIVE SPECTRA >>>>

ES-API Positive

