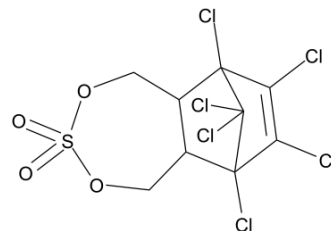


## Endosulfan sulfate

Cat. No.:	HY-117179
CAS No.:	1031-07-8
Molecular Formula:	C <sub>9</sub> H <sub>6</sub> Cl <sub>6</sub> O <sub>4</sub> S
Molecular Weight:	422.92
Target:	Parasite
Pathway:	Anti-infection
Storage:	Please store the product under the recommended conditions in the Certificate of Analysis.



### BIOLOGICAL ACTIVITY

Description	Endosulfan sulfate is the major metabolite of the insecticide Endosulfan, used for various crops. Endosulfan sulfate is more toxic and persistent than Endosulfan <sup>[1]</sup> .
In Vitro	Endosulfan sulfate is the major metabolite of the insecticide Endosulfan, which is composed of two stereoisomers ( $\alpha$ and $\beta$ ) <sup>[1]</sup> . MCE has not independently confirmed the accuracy of these methods. They are for reference only.

### REFERENCES

[1]. Lee, H., et al. X-ray crystal structure of endosulfan sulfate. Appl Biol Chem 62, 57 (2019).

**Caution: Product has not been fully validated for medical applications. For research use only.**

Tel: 609-228-6898

Fax: 609-228-5909

E-mail: tech@MedChemExpress.com

Address: 1 Deer Park Dr, Suite Q, Monmouth Junction, NJ 08852, USA