

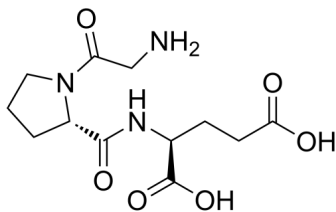
Gly-Pro-Glu

Cat. No.: HY-117483
Batch No.: 289722
CAS No.: 32302-76-4
Molecular Formula: C₁₂H₁₉N₃O₆

ANALYTICAL DATA

Theoretical: C(-), H(-), N(-), Peptide Content(≥60.0%)
Result: C(46.24%), H(6.46%), N(13.63%), Peptide Content(97.70%)

Chemical Structure:



Caution: Product has not been fully validated for medical applications. For research use only.

Tel: 609-228-6898

Fax: 609-228-5909

E-mail: tech@MedChemExpress.com

Address: 1 Deer Park Dr, Suite Q, Monmouth Junction, NJ 08852, USA