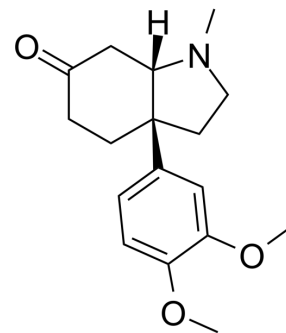


## (-)-Mesembrine

Cat. No.:	HY-117526
CAS No.:	24880-43-1
Molecular Formula:	C <sub>17</sub> H <sub>23</sub> NO <sub>3</sub>
Molecular Weight:	289.37
Target:	Endogenous Metabolite
Pathway:	Metabolic Enzyme/Protease
Storage:	Please store the product under the recommended conditions in the Certificate of Analysis.



### BIOLOGICAL ACTIVITY

Description	(-)-Mesembrine, a psychoactive alkaloid, is a partial racemate in <i>S. strictum</i> and <i>S. tortuosum</i> in smaller amounts <sup>[1]</sup> .
IC <sub>50</sub> & Target	Microbial Metabolite

### REFERENCES

[1]. Patnala S, et al. A capillary zone electrophoresis method for the assay and quality control of mesembrine in *Sceletium* tablets. *J Pharm Biomed Anal.* 2008;48(2):440-446.

**Caution: Product has not been fully validated for medical applications. For research use only.**

Tel: 609-228-6898

Fax: 609-228-5909

E-mail: tech@MedChemExpress.com

Address: 1 Deer Park Dr, Suite Q, Monmouth Junction, NJ 08852, USA