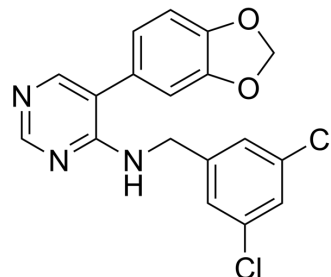


ML 315

Cat. No.:	HY-117608
CAS No.:	1440251-53-5
Molecular Formula:	C ₁₈ H ₁₃ Cl ₂ N ₃ O ₂
Molecular Weight:	374.22
Target:	CDK; DYRK
Pathway:	Cell Cycle/DNA Damage; Protein Tyrosine Kinase/RTK
Storage:	Please store the product under the recommended conditions in the Certificate of Analysis.



BIOLOGICAL ACTIVITY

Description

ML 315 is a selective dual inhibitor of CDK and DYRK with IC₅₀s of 68 nM and 282 nM, respectively. ML 315 is used in cancer and neurological disease research^[1].

REFERENCES

[1]. Coombs TC, et al. Small-molecule pyrimidine inhibitors of the cdc2-like (Clk) and dual specificity tyrosine phosphorylation-regulated (Dyrk) kinases: development of chemical probe ML315. *Bioorg Med Chem Lett*. 2013 Jun 15;23(12):3654-61.

Caution: Product has not been fully validated for medical applications. For research use only.

Tel: 609-228-6898

Fax: 609-228-5909

E-mail: tech@MedChemExpress.com

Address: 1 Deer Park Dr, Suite Q, Monmouth Junction, NJ 08852, USA