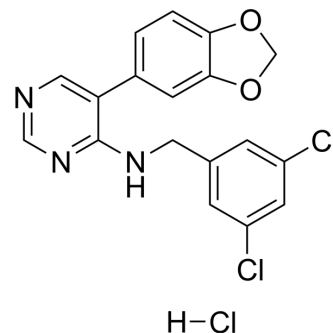


ML 315 hydrochloride

Cat. No.:	HY-117608A
CAS No.:	2172559-91-8
Molecular Formula:	C ₁₈ H ₁₄ Cl ₃ N ₃ O ₂
Molecular Weight:	410.68
Target:	CDK; DYRK
Pathway:	Cell Cycle/DNA Damage; Protein Tyrosine Kinase/RTK
Storage:	4°C, sealed storage, away from moisture * In solvent : -80°C, 6 months; -20°C, 1 month (sealed storage, away from moisture)



BIOLOGICAL ACTIVITY

Description

ML 315 is a selective dual inhibitor of CDK and DYRK with IC₅₀s of 68 nM and 282 nM, respectively. ML 315 is used in cancer and neurological disease research^[1].

REFERENCES

[1]. Coombs TC, et al. Small-molecule pyrimidine inhibitors of the cdc2-like (Clk) and dual specificity tyrosine phosphorylation-regulated (Dyrk) kinases: development of chemical probe ML315. *Bioorg Med Chem Lett*. 2013 Jun 15;23(12):3654-61.

Caution: Product has not been fully validated for medical applications. For research use only.

Tel: 609-228-6898

Fax: 609-228-5909

E-mail: tech@MedChemExpress.com

Address: 1 Deer Park Dr, Suite Q, Monmouth Junction, NJ 08852, USA