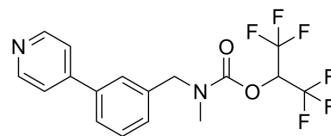


JW 618

Cat. No.:	HY-117722
CAS No.:	1416133-88-4
Molecular Formula:	C ₁₇ H ₁₄ F ₆ N ₂ O ₂
Molecular Weight:	392.3
Target:	MAGL
Pathway:	Metabolic Enzyme/Protease
Storage:	Please store the product under the recommended conditions in the Certificate of Analysis.



BIOLOGICAL ACTIVITY

Description	JW 618 is a selective ABHD6 inhibitor, with IC ₅₀ s of 38 and 13 nM for mouse and rat ABHD6 ^[1] .
In Vitro	JW 618 (0.1-50 μM, 30 min) inhibits protein expression of MAGL and ABHD6 in mouse or rat brain proteomes ^[1] . MCE has not independently confirmed the accuracy of these methods. They are for reference only.

REFERENCES

[1]. Chang JW, et al. Highly selective inhibitors of monoacylglycerol lipase bearing a reactive group that is bioisosteric with endocannabinoid substrates. Chem Biol. 2012 May 25;19(5):579-88.

Caution: Product has not been fully validated for medical applications. For research use only.

Tel: 609-228-6898

Fax: 609-228-5909

E-mail: tech@MedChemExpress.com

Address: 1 Deer Park Dr, Suite Q, Monmouth Junction, NJ 08852, USA