

GSK837149A

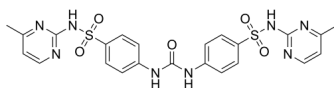
Cat. No.: HY-117769
Batch No.: 357485
CAS No.: 13616-29-0
Molecular Formula: C₂₃H₂₂N₈O₅S₂

ANALYTICAL DATA

Theoretical: C(49.81%)、H(4.00%)、N(20.19%)

Result: C(49.97%)、H(3.97%)、N(20.09%)

Chemical Structure:



Caution: Product has not been fully validated for medical applications. For research use only.

Tel: 609-228-6898

Fax: 609-228-5909

E-mail: tech@MedChemExpress.com

Address: 1 Deer Park Dr, Suite Q, Monmouth Junction, NJ 08852, USA