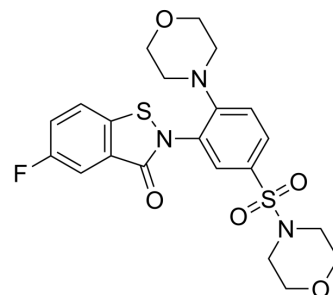


ML345

Cat. No.:	HY-117878		
CAS No.:	1632125-79-1		
Molecular Formula:	C ₂₁ H ₂₂ FN ₃ O ₅ S ₂		
Molecular Weight:	479.54		
Target:	Others		
Pathway:	Others		
Storage:	Powder	-20°C	3 years
		4°C	2 years
	In solvent	-80°C	6 months
		-20°C	1 month



SOLVENT & SOLUBILITY

In Vitro

DMSO : 25 mg/mL (52.13 mM; Need ultrasonic)

	Solvent Concentration	Mass	1 mg	5 mg	10 mg
Preparing Stock Solutions	1 mM		2.0853 mL	10.4267 mL	20.8533 mL
	5 mM		0.4171 mL	2.0853 mL	4.1707 mL
	10 mM		0.2085 mL	1.0427 mL	2.0853 mL

Please refer to the solubility information to select the appropriate solvent.

BIOLOGICAL ACTIVITY

Description

ML345 is a potent and selective insulin-degrading enzyme (IDE) small-molecule inhibitor, with an IC₅₀ value of 188 nM. ML345 can be for use as a pharmacophore for agent development in diabetes research^[1].

IC₅₀ & Target

IC₅₀: 188 nM (IDE)^[1]

REFERENCES

[1]. Bannister TD, et al. ML345, A Small-Molecule Inhibitor of the Insulin-Degrading Enzyme (IDE). In: Probe Reports from the NIH Molecular Libraries Program. Bethesda (MD): National Center for Biotechnology Information (US); December 17, 2012.

Caution: Product has not been fully validated for medical applications. For research use only.

Tel: 609-228-6898

Fax: 609-228-5909

E-mail: tech@MedChemExpress.com

Address: 1 Deer Park Dr, Suite Q, Monmouth Junction, NJ 08852, USA