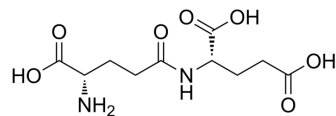


## L-γ-Glutamyl-L-glutamic acid

|                    |  |
|--------------------|--|
| Cat. No.:          | HY-118090  |
| CAS No.:           | 1116-22-9  |
| Molecular Formula: | C <sub>10</sub> H <sub>16</sub> N <sub>2</sub> O <sub>7</sub>                                    |
| Molecular Weight:  | 276.24   |
| Target:            | Others   |
| Pathway:           | Others   |
| Storage:           | -20°C, protect from light<br>* In solvent : -80°C, 6 months; -20°C, 1 month (protect from light) |



### BIOLOGICAL ACTIVITY

#### Description

L-γ-Glutamyl-L-glutamic acid is the isomer of D-γ-Glutamyl-D-glutamic acid (HY-118090A), and can be used as an experimental control. D-γ-Glutamyl-D-glutamic acid is a poly(γ-glutamic acid) of clusters of D- and D-glutamic acid repeating units in a linear chain<sup>[1]</sup>.

### REFERENCES

[1]. Wang F, et al. Microstructure of poly(γ-glutamic acid) produced by *Bacillus subtilis* consisting of clusters of D- and L-glutamic acid repeating units. *J Agric Food Chem.* 2008 Jun 11;56(11):4225-8.

**Caution: Product has not been fully validated for medical applications. For research use only.**

Tel: 609-228-6898

Fax: 609-228-5909

E-mail: tech@MedChemExpress.com

Address: 1 Deer Park Dr, Suite Q, Monmouth Junction, NJ 08852, USA