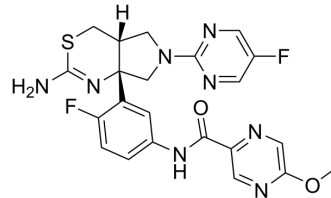


LY3202626

Cat. No.:	HY-118098
CAS No.:	1628690-73-2
Molecular Formula:	C ₂₂ H ₂₀ F ₂ N ₈ O ₂ S
Molecular Weight:	498.51
Target:	Beta-secretase
Pathway:	Neuronal Signaling
Storage:	Please store the product under the recommended conditions in the Certificate of Analysis.



BIOLOGICAL ACTIVITY

Description	LY3202626 is a CNS penetrant BACE inhibitor with IC ₅₀ s of 0.615 nM and 0.871 nM against BACE1 and BACE2, respectively ^[1] .
IC ₅₀ & Target	IC ₅₀ : 0.615 nM (BACE1), 0.871 nM (BACE2) ^[1]

REFERENCES

[1]. McKinzie DL, et al. Discovery and Early Clinical Development of LY3202626, a Low-Dose, CNS-Penetrant BACE Inhibitor. J Med Chem. 2021 Jun 24;64(12):8076-8100.

Caution: Product has not been fully validated for medical applications. For research use only.

Tel: 609-228-6898

Fax: 609-228-5909

E-mail: tech@MedChemExpress.com

Address: 1 Deer Park Dr, Suite Q, Monmouth Junction, NJ 08852, USA