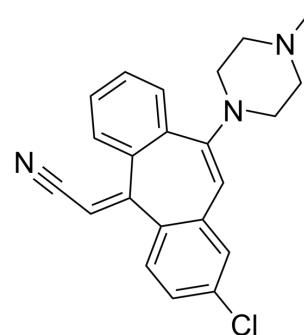


Rilapine

Cat. No.:	HY-118127
CAS No.:	79781-95-6
Molecular Formula:	C ₂₂ H ₂₀ ClN ₃
Molecular Weight:	361.87
Target:	Others
Pathway:	Others
Storage:	Please store the product under the recommended conditions in the Certificate of Analysis.



BIOLOGICAL ACTIVITY

Description	Rilapine is an atypical antipsychotic agent ^[1] .
-------------	--

REFERENCES

[1]. Zeng XP, et al. Muscarinic m4 receptor activation by some atypical antipsychotic drugs. Eur J Pharmacol. 1997 Mar 5;321(3):349-54.

Caution: Product has not been fully validated for medical applications. For research use only.

Tel: 609-228-6898

Fax: 609-228-5909

E-mail: tech@MedChemExpress.com

Address: 1 Deer Park Dr, Suite Q, Monmouth Junction, NJ 08852, USA