

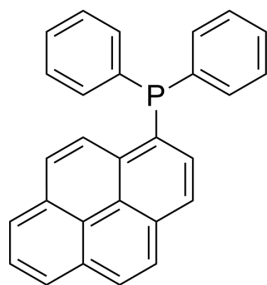
Diphenyl-1-pyrenylphosphine

Cat. No.: HY-118159
CAS No.: 110231-30-6
Batch No.: 266585
Chemical Name: Phosphine, diphenyl-1-pyrenyl-

PHYSICAL AND CHEMICAL PROPERTIES

Molecular Formula: C₂₈H₁₉P
Molecular Weight: 386.42
Storage: 4°C, protect from light
* In solvent : -80°C, 6 months; -20°C, 1 month (protect from light)

Chemical Structure:



ANALYTICAL DATA

Appearance: Off-white to light yellow (Solid)
¹H NMR Spectrum: Consistent with structure
MS: Consistent with structure
Purity (HPLC): 99.68%
Conclusion: The product has been tested and complies with the given specifications.

Caution: Product has not been fully validated for medical applications. For research use only.

Tel: 609-228-6898

Fax: 609-228-5909

E-mail: tech@MedChemExpress.com

Address: 1 Deer Park Dr, Suite Q, Monmouth Junction, NJ 08852, USA