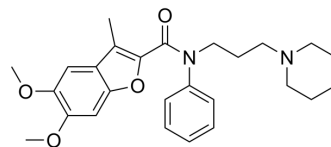


## KSCM-1

Cat. No.:	HY-118279
CAS No.:	1415247-17-4
Molecular Formula:	C <sub>26</sub> H <sub>32</sub> N <sub>2</sub> O <sub>4</sub>
Molecular Weight:	436.54
Target:	Sigma Receptor
Pathway:	Neuronal Signaling
Storage:	Please store the product under the recommended conditions in the Certificate of Analysis.



## BIOLOGICAL ACTIVITY

Description	KSCM-1 is a selective sigma-1 receptor ligand with a K <sub>i</sub> of 27.5 nM. KSCM-1 shows more selective for sigma-1 over sigma-2, and shows no significant affinity at non-sigma receptors <sup>[1]</sup> .	
IC <sub>50</sub> & Target	Sigma 1 Receptor 27.5 nM (K <sub>i</sub> )	Sigma 2 Receptor 528 nM (K <sub>i</sub> )

## REFERENCES

[1]. Karla-Sue C Marriott, et al. Synthesis of N-phenyl-N-(3-(piperidin-1-yl)propyl)benzofuran-2-carboxamides as new selective ligands for sigma receptors. Bioorg Med Chem. 2012 Dec 1;20(23):6856-61.

**Caution: Product has not been fully validated for medical applications. For research use only.**

Tel: 609-228-6898

Fax: 609-228-5909

E-mail: tech@MedChemExpress.com

Address: 1 Deer Park Dr, Suite Q, Monmouth Junction, NJ 08852, USA