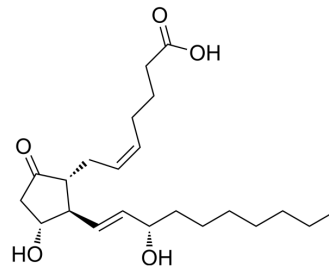


## 20-Ethyl prostaglandin E2

Cat. No.:	HY-118414
CAS No.:	37492-24-3
Molecular Formula:	C <sub>22</sub> H <sub>36</sub> O <sub>5</sub>
Molecular Weight:	380.52
Target:	Prostaglandin Receptor
Pathway:	GPCR/G Protein
Storage:	Please store the product under the recommended conditions in the Certificate of Analysis.



### BIOLOGICAL ACTIVITY

#### Description

20-Ethyl prostaglandin E2 (compound 62) is a PG analog that stimulates Nurr1-dependent transcriptional activity<sup>[1]</sup>.

### REFERENCES

[1]. Cheolhwan Yoon, et al. Prostaglandin analogs and uses thereof. US20210139435A1. 2020.

**Caution: Product has not been fully validated for medical applications. For research use only.**

Tel: 609-228-6898

Fax: 609-228-5909

E-mail: tech@MedChemExpress.com

Address: 1 Deer Park Dr, Suite Q, Monmouth Junction, NJ 08852, USA