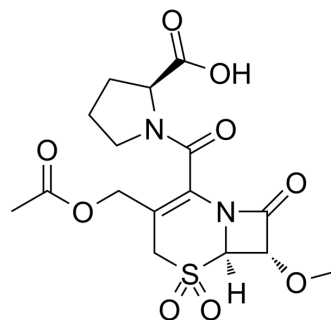


L 658758

Cat. No.:	HY-118459
CAS No.:	116507-04-1
Molecular Formula:	C ₁₆ H ₂₀ N ₂ O ₉ S
Molecular Weight:	416.4
Target:	Ser/Thr Protease
Pathway:	Metabolic Enzyme/Protease
Storage:	Please store the product under the recommended conditions in the Certificate of Analysis.



BIOLOGICAL ACTIVITY

Description

L 658758 is a potent inhibitor of serine proteinase^[1].

REFERENCES

[1]. S. Koyama, et al. Antiproteases modulate bronchial epithelial cell responses to endotoxin. 1995 May; 146(5): 1207-1219.

Caution: Product has not been fully validated for medical applications. For research use only.

Tel: 609-228-6898

Fax: 609-228-5909

E-mail: tech@MedChemExpress.com

Address: 1 Deer Park Dr, Suite Q, Monmouth Junction, NJ 08852, USA