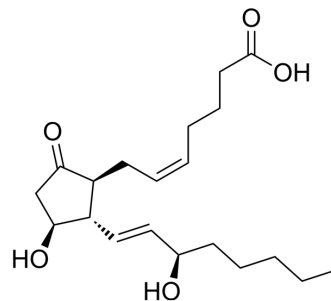


ent-Prostaglandin E2

Cat. No.:	HY-118465
CAS No.:	65085-69-0
Molecular Formula:	C ₂₀ H ₃₂ O ₅
Molecular Weight:	352.47
Target:	Others
Pathway:	Others
Storage:	Please store the product under the recommended conditions in the Certificate of Analysis.



BIOLOGICAL ACTIVITY

Description

ent-Prostaglandin E2 (ent-PGE2) is an enantiomer of PGE2 (HY-101952). Unlike PGE2, ent-PGE2 is a poor substrate for 15-hydroxyprostaglandin dehydrogenase^[1].

REFERENCES

[1]. Gao L, et al. Formation of prostaglandins E2 and D2 via the isoprostane pathway: a mechanism for the generation of bioactive prostaglandins independent of cyclooxygenase. *J Biol Chem.* 2003 Aug 1;278(31):28479-89.

Caution: Product has not been fully validated for medical applications. For research use only.

Tel: 609-228-6898

Fax: 609-228-5909

E-mail: tech@MedChemExpress.com

Address: 1 Deer Park Dr, Suite Q, Monmouth Junction, NJ 08852, USA