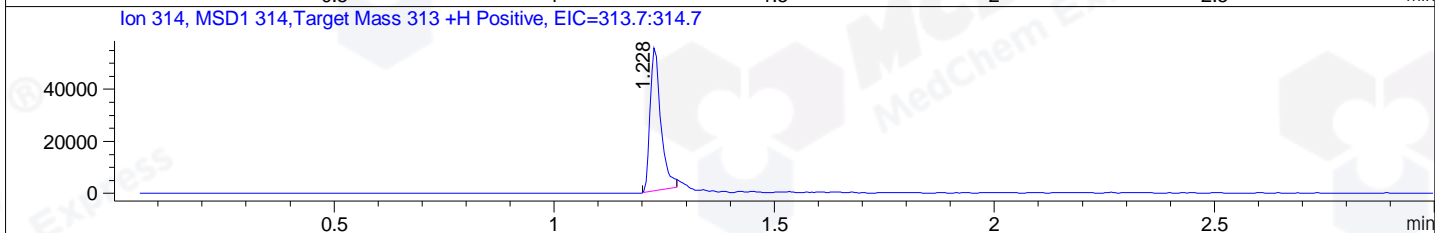
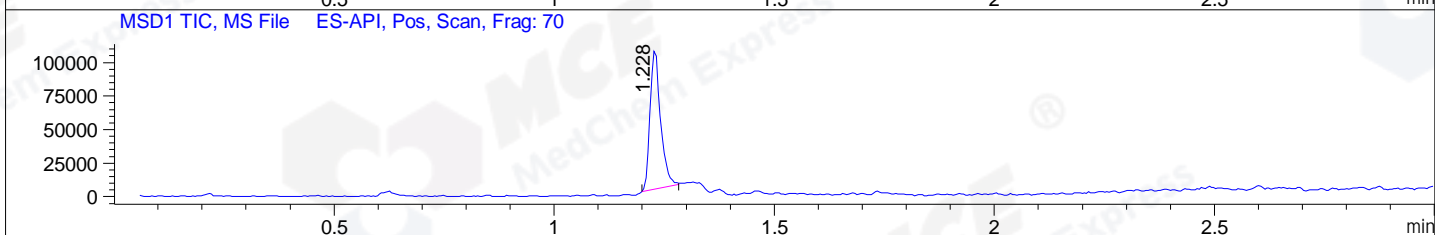
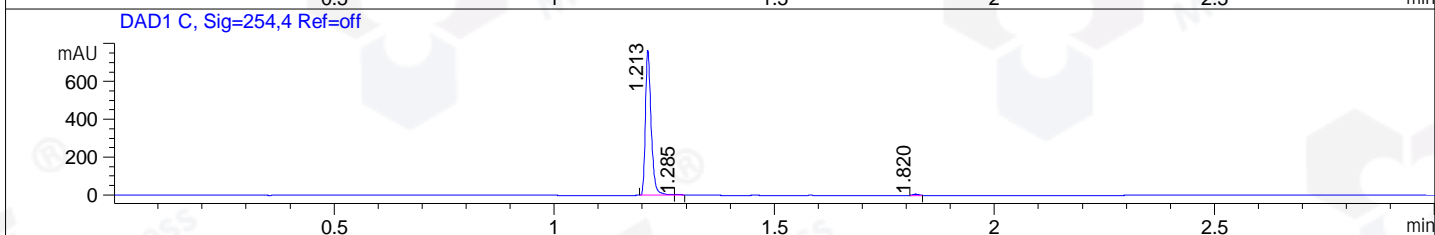
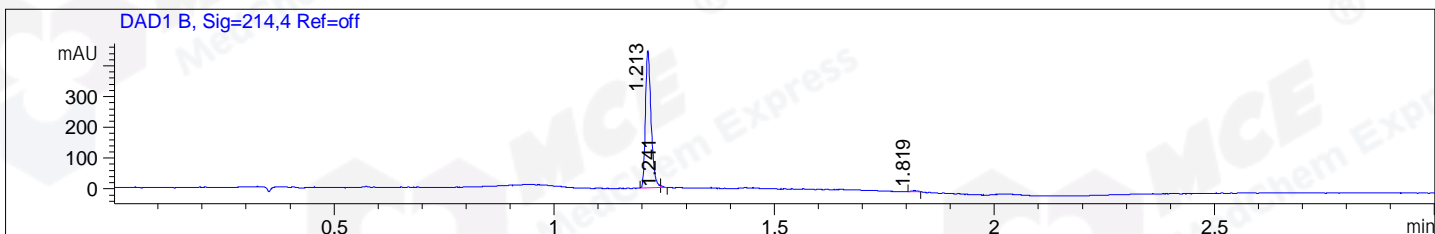


File ..\DATA\2021\20210106\1227\BIZ2021-106-WMX9.D Tgt Mass (CHM):
 Injection Date : 6 Jan 21 4:44 pm +0800 Seq. Line : 87
 Sample Name : BIZ2021-106-WMX9 Location : P1-E-01
 Acq. Operator : zyj_1547 Inj : 1
 Spec. Reported : MS Integration Inj Volume : 1 ul
 Acq. Method : D:\Chem32\1\data\2021\20210106\1227\1-POS-3MIN.M
 Analysis Method : D:\CHEM32\1\DATA\2021\20210106\1227\1-POS-3MIN.M
 CAS NO. : 928853-86-5
 Method Info : Mobile Phase: A: water(0.01%TFA) B:ACN(0.01%TFA)
 Gradient: 5% to 95%B within 1.3 min
 Flow Rate :1.8ml/min
 Column :SunFire C18, 4.6*50mm,3.5um A-RP-698



Integration Results for DAD1 B, Sig=214,4 Ref=off

RetTim	Width	Area	Height	Area%	MS (+)
1.21	0.01	399.53	447.25	98.31	314
1.24	0.01	2.65	6.11	0.65	314
1.82	0.01	4.23	3.84	1.04	ND

Integration Results for DAD1 C, Sig=254,4 Ref=off

RetTim	Width	Area	Height	Area%	MS (+)
1.21	0.02	697.38	767.92	98.71	314
1.28	0.01	3.07	3.53	0.43	314
1.82	0.01	6.06	6.88	0.86	ND

Integration Results for MSD1 TIC, MS File

RetTim	Width	Area	Height	Area%	MS (+)
1.23	0.02	172493.86	103914.94	100.00	314

Ret. Time: 1.23

<<<< POSITIVE SPECTRA >>>>

ES-API Positive

