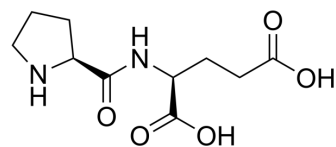


## H-Pro-Glu-OH

Cat. No.:	HY-118481
CAS No.:	67644-00-2
Molecular Formula:	C <sub>10</sub> H <sub>16</sub> N <sub>2</sub> O <sub>5</sub>
Molecular Weight:	244.24
Target:	Others
Pathway:	Others
Storage:	Please store the product under the recommended conditions in the Certificate of Analysis.



### BIOLOGICAL ACTIVITY

<b>Description</b>	H-Pro-Glu-OH is a protein secreted by pathogenic mycobacteria through the Type VII secretion system. H-Pro-Glu-OH targets LipY lipases to the cell Surface via the ESX-5 Pathway <sup>[1]</sup> .
--------------------	---

### REFERENCES

[1]. Daleke MH, et al. Conserved Pro-Glu (PE) and Pro-Pro-Glu (PPE) protein domains target LipY lipases of pathogenic mycobacteria to the cell surface via the ESX-5 pathway. J Biol Chem. 2011 May 27;286(21):19024-34.

**Caution: Product has not been fully validated for medical applications. For research use only.**

Tel: 609-228-6898

Fax: 609-228-5909

E-mail: tech@MedChemExpress.com

Address: 1 Deer Park Dr, Suite Q, Monmouth Junction, NJ 08852, USA