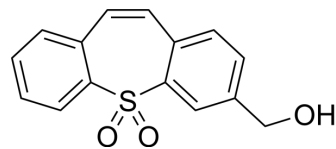


L 640035

Cat. No.:	HY-118488
CAS No.:	77167-93-2
Molecular Formula:	C ₁₅ H ₁₂ O ₃ S
Molecular Weight:	272.32
Target:	Prostaglandin Receptor
Pathway:	GPCR/G Protein
Storage:	Please store the product under the recommended conditions in the Certificate of Analysis.



BIOLOGICAL ACTIVITY

Description	L 640035 is a thromboxane antagonist ^[1] .
-------------	---

REFERENCES

[1]. Foegh ML, et al. Prolongation of experimental cardiac allograft survival with thromboxane-related drugs. *Transplantation*. 1985;40(2):124-125.

Caution: Product has not been fully validated for medical applications. For research use only.

Tel: 609-228-6898

Fax: 609-228-5909

E-mail: tech@MedChemExpress.com

Address: 1 Deer Park Dr, Suite Q, Monmouth Junction, NJ 08852, USA