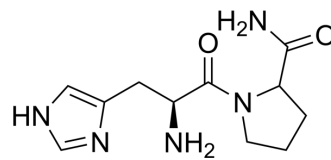


## Histidylprolineamide

Cat. No.:	HY-118576
CAS No.:	33605-69-5
Molecular Formula:	C <sub>11</sub> H <sub>17</sub> N <sub>5</sub> O <sub>2</sub>
Molecular Weight:	251.28
Sequence:	H-His-Pro-NH <sub>2</sub>
Sequence Shortening:	HP-NH <sub>2</sub>
Target:	Others
Pathway:	Others
Storage:	Please store the product under the recommended conditions in the Certificate of Analysis.



### BIOLOGICAL ACTIVITY

Description	Histidylprolineamide (His-pro-amide) is a reactive amide, an intermediate in the histidine metabolic pathway <sup>[1]</sup> .
-------------	---

### REFERENCES

[1]. T Matsui, et al. Metabolism of thyrotropin releasing hormone in brain extracts. Isolation and characterization of an imidopeptidase for histidylprolineamide. J Biol Chem. 1979 Apr 10;254(7):2439-45.

**Caution: Product has not been fully validated for medical applications. For research use only.**

Tel: 609-228-6898

Fax: 609-228-5909

E-mail: tech@MedChemExpress.com

Address: 1 Deer Park Dr, Suite Q, Monmouth Junction, NJ 08852, USA