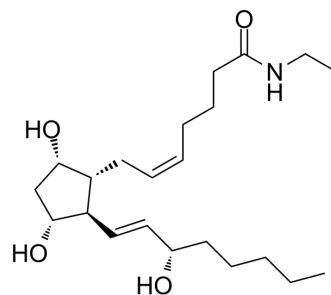


Prostaglandin F2 α ethyl amide

Cat. No.:	HY-118599
CAS No.:	54130-36-8
Molecular Formula:	C ₂₂ H ₃₉ NO ₄
Molecular Weight:	381.55
Target:	Others
Pathway:	Others
Storage:	Please store the product under the recommended conditions in the Certificate of Analysis.



BIOLOGICAL ACTIVITY

Description

Prostaglandin F2 α ethyl amide is an analog of Prostaglandin F2 α (HY-12956). Prostaglandin F2 α ethyl amide is supposed to be potent lowering intraocular pressure (IOP) for its N-ethyl amide group, like Bimatoprost (HY-B0191)^[1].

REFERENCES

[1]. Bito LZ. Comparison of the ocular hypotensive efficacy of eicosanoids and related compounds. Exp Eye Res. 1984 Feb;38(2):181-94.

Caution: Product has not been fully validated for medical applications. For research use only.

Tel: 609-228-6898

Fax: 609-228-5909

E-mail: tech@MedChemExpress.com

Address: 1 Deer Park Dr, Suite Q, Monmouth Junction, NJ 08852, USA