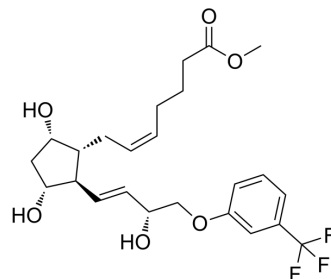


## Fluprostenol methyl ester

Cat. No.:	HY-118624
CAS No.:	73275-76-0
Molecular Formula:	C <sub>24</sub> H <sub>31</sub> F <sub>3</sub> O <sub>6</sub>
Molecular Weight:	472.49
Target:	Prostaglandin Receptor
Pathway:	GPCR/G Protein
Storage:	Please store the product under the recommended conditions in the Certificate of Analysis.



### BIOLOGICAL ACTIVITY

#### Description

Fluprostenol methyl ester is an F-series prostaglandin analog which has been approved for many years as a luteolytic in veterinary animals<sup>[1]</sup>.

### REFERENCES

[1]. M D Ungrin, et al. Key structural features of prostaglandin E(2) and prostanoid analogs involved in binding and activation of the human EP(1) prostanoid receptor. Mol Pharmacol. 2001 Jun;59(6):1446-56.

[2]. M D Ungrin, et al. Key structural features of prostaglandin E(2) and prostanoid analogs involved in binding and activation of the human EP(1) prostanoid receptor. Mol Pharmacol. 2001 Jun;59(6):1446-56.

**Caution: Product has not been fully validated for medical applications. For research use only.**

Tel: 609-228-6898

Fax: 609-228-5909

E-mail: tech@MedChemExpress.com

Address: 1 Deer Park Dr, Suite Q, Monmouth Junction, NJ 08852, USA